

Service Manual

AUTOMOTIVE ELECTRONICS



HONDA CQ-EH9160A

AM/FM MPX ELECTRONIC TUNING
RADIO with Stereo Cassette Tape
Player and 6-Disc CD Changer

PART No. : 39100-S6M-A100

ID CORD : 1TJ2

VEHICLE : ACURA RSX

DESTINATION : North America

PRODUCED AFTER : Apr., 2001

Specification*

General

Power Supply	DC 12V (11V - 16V), Test Voltage 13.2V Negative Ground
Current Consumption	Less than 1.0A (at VOL. MAX)
Output Voltage	More than 400mVrms
Output Impedance	1.5k Ω

AM Radio

Frequency Range	530 - 1,710kHz
Usable Sensitivity	24dB/ μ V (S/N 20dB)

FM Stereo Radio

Frequency Range	87.75 - 107.9MHz
Usable Sensitivity	6dB/ μ V (S/N 30dB)

Cassette Player

Reproduction System	4-Track, 2-Program Stereo
Tape Speed	4.76cm/sec.
Wow and Flutter	Less than 0.2% (WRMS)
Signal to Noise Ratio	More than 40dB

CD Player

Signal to Noise Ratio	More than 70dB (IHF-A)
Total Harmonic Distortion	Less than 0.4%
Channel Separation	More than 50dB (IHF-A)


Dimensions** (W×H×D)	180×102×165mm
----------------------	---------------

Weight**	2.4kg
----------	-------

* Specifications and the design are subject to possible modification without notice due to improvements.

** Dimensions and Weight shown are approximate.

Dolby noise reduction manufactured under license from Dolby Laboratories Licensing Corporation.

"Dolby" and the double-D symbol  are trade marks of Dolby Laboratories Licensing Corporation.

CONTENTS

	Page		Page
1 FEATUERS	2	13 REPLACEMENT PARTS LIST	16
2 LASER PRODUCTS	2	14 EXPLODED VIEW (Unit)	21
3 REAR VIEW	2	15 CD CHANGER PARTS LIST	22
4 FRONT VIEW AND FUNCTIONS	3	16 EXPLODED VIEW (CD Deck-1)	25
5 WIRING CONNECTIONS	4	17 EXPLODED VIEW (CD Deck-2)	26
6 BLOCK DIAGRAM (Main, Display, Tape Block)	5	18 EXPLODED VIEW (CD Deck-3)	27
7 BLOCK DIAGRAM (CD Servo Block)	6	19 TAPE PLAYER PARTS	28
8 TERMINALS DESCRIPTION	7	20 EXPLODED VIEW (Tape Deck)	30
9 ALIGNMENT INSTRUCTIONS	10	21 WIRING DIAGRAM	31
10 ALIGNMENT POINTS	10	22 SCHEMATIC DIAGRAM (1)	38
11 CD DISC CENTERING ALIGNMENT	11	23 SCHEMATIC DIAGRAM (2)	39
12 PACKAGE AND IC BLOCK DIAGRAM	12		

1 FEATUERS

- PLL (Phase Locked Loop) synthesized tuning.
- 18-station preset (12-FM, 6-AM).
- 6-Disc CD changer (in dash board).
- Dolby noise reduction.
- Electronic control of power and sound.
- Correspondence with BOSE Amp.
- Anti-Theft function.

2 LASER PRODUCTS

Do not take apart this unit or attempt to make any changes yourself.

This unit is very intricate that uses a laser pickup to retrieve information from the surface of compact discs. The laser is carefully shielded so that its rays remain inside the cabinet. Therefore, never try to disassemble the player or alter any of its parts since you may be exposed to laser rays and dangerous voltages.

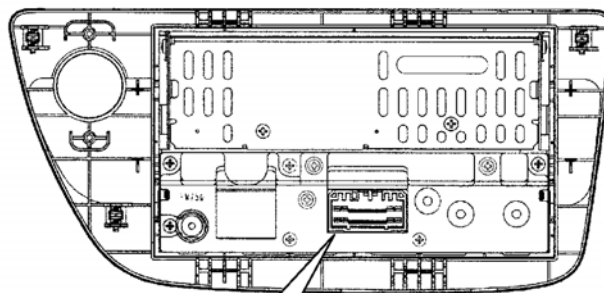
Laser products :

Wave length	780nm
Laser power	No hazardous radiation is emitted with safety protection.

Caution

This product utilizes a laser. Use of controls or adjustments or performance of procedures other than those specified herein may result in hazardous radiation exposure.

3 REAR VIEW

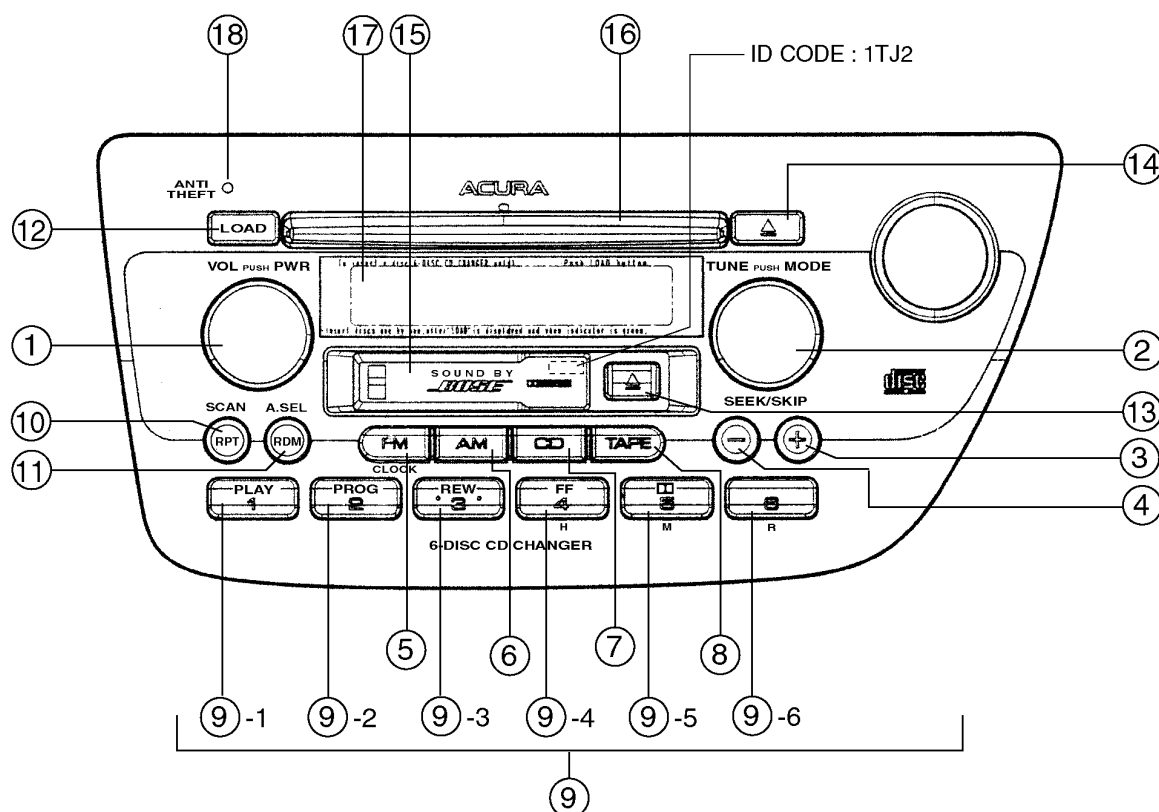


<CN701 20P CONNECTOR>

1	2	5	6	7	8	9	10	17	18
3	4	11	12	13	14	15	16	19	20

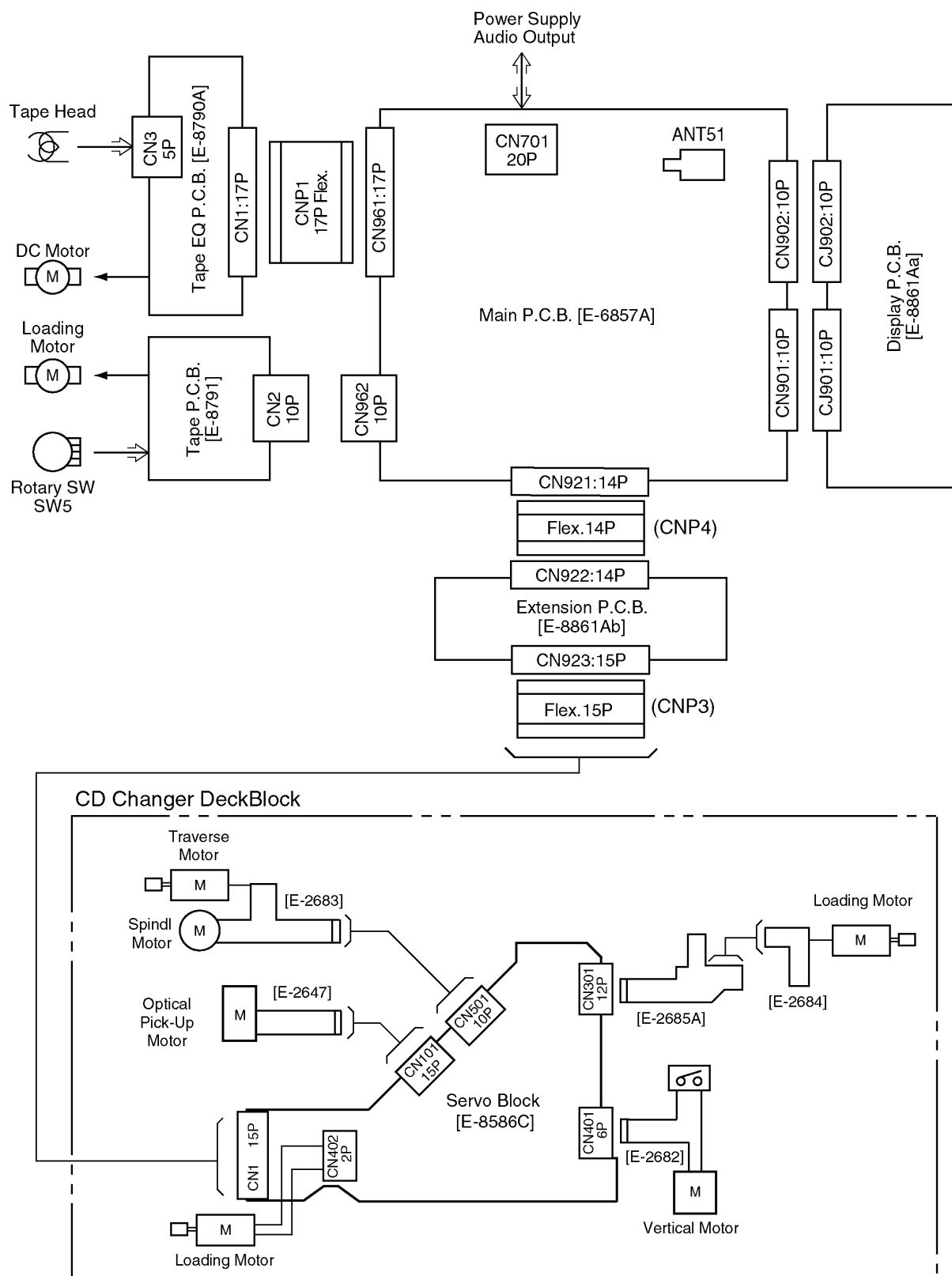
- | | |
|-------------------|-------------------|
| 1. SW+B | 11. No Connection |
| 2. ACC | 12. No Connection |
| 3. No Connection | 13. Rear Rch (-) |
| 4. No Connection | 14. Rear Lch (-) |
| 5. Remote | 15. Front Rch (-) |
| 6. SEC-IN | 16. Front Lch (-) |
| 7. Rear Rch (+) | 17. Illumi. |
| 8. Rear Lch (+) | 18. BATT. (+B) |
| 9. Front Rch (+) | 19. Illumi (-) |
| 10. Front Lch (+) | 20. Ground |

4 FRONT VIEW AND FUNCTIONS

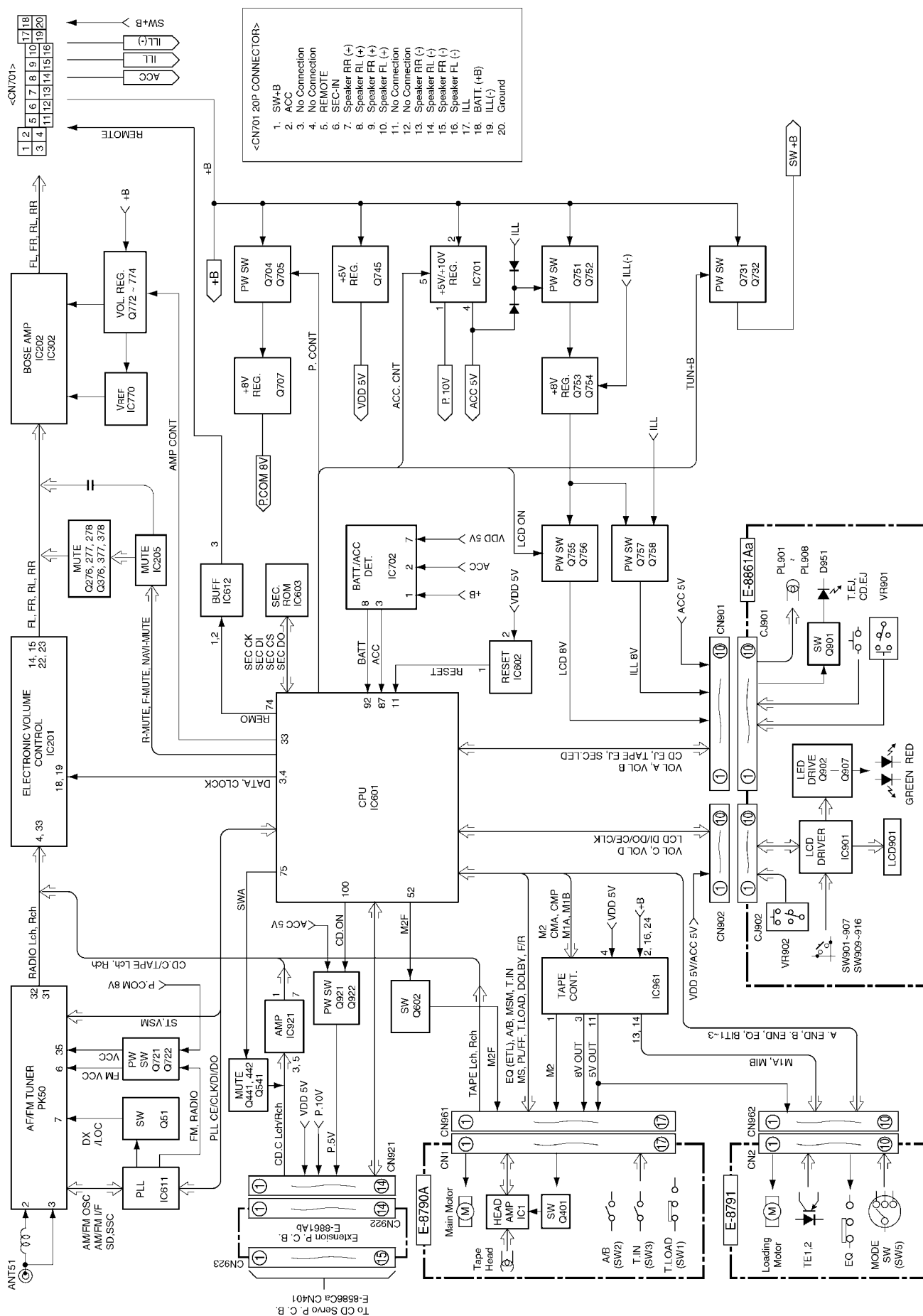


- | | | | |
|-----------------|------------------------------------|----------|-------------------------------|
| ① PWR | : Power on/off. | ⑨-1 PLAY | : Tape play mode. |
| VOL | : Volume control. | ⑨-2 PLOG | : Tape program change. |
| ② MODE | : Audio adjustment mode selection. | ⑨-3 REW | : Tape rewind. |
| TUNE | : Radio manual tuning. | ⑨-4 FF | : Tape fast forward. |
| ③ SEEK/SKIP (+) | : Radio seek/skip up tuning. | H | : Time adjustment (hour). |
| | : Tape APC (forward) operation. | ⑨-5 NR | : Tape dolby NR on/off. |
| | : CD disc fast forward. | M | : Time adjustment (Minute). |
| ④ SEEK/SKIP (-) | : Radio seek/skip down tuning. | ⑨-6 R | : Minute/Sec. digit reset. |
| | : Tape APC (Reverse) operation. | ⑩ SCAN | : Radio scan up tuning. |
| | : CD disc reverse. | RPT | : Tape/CD repeate play. |
| ⑤ FM | : FM radio mode selection. | ⑪ A.SEL | : Radio stations auto-preset. |
| CLOCK | : Clock adjustment mode. | RDM | : CD random play. |
| ⑥ AM | : AM radio mode selection. | ⑫ LOAD | : CD disc loading. |
| ⑦ CD | : CD mode selection. | ⑬ ▲ | : Tape eject. |
| ⑧ TAPE | : TAPE mode selection. | ⑭ ▲ | : CD disc eject. |
| ⑨ 1~6 | : Radio frequency preset/call. | ⑮ | : Cassette slot. |
| | : CD changer disc selection. | ⑯ | : CD slot. |
| | | ⑰ | : LCD display. |
| | | ⑱ | : Anti-theft indicator. |

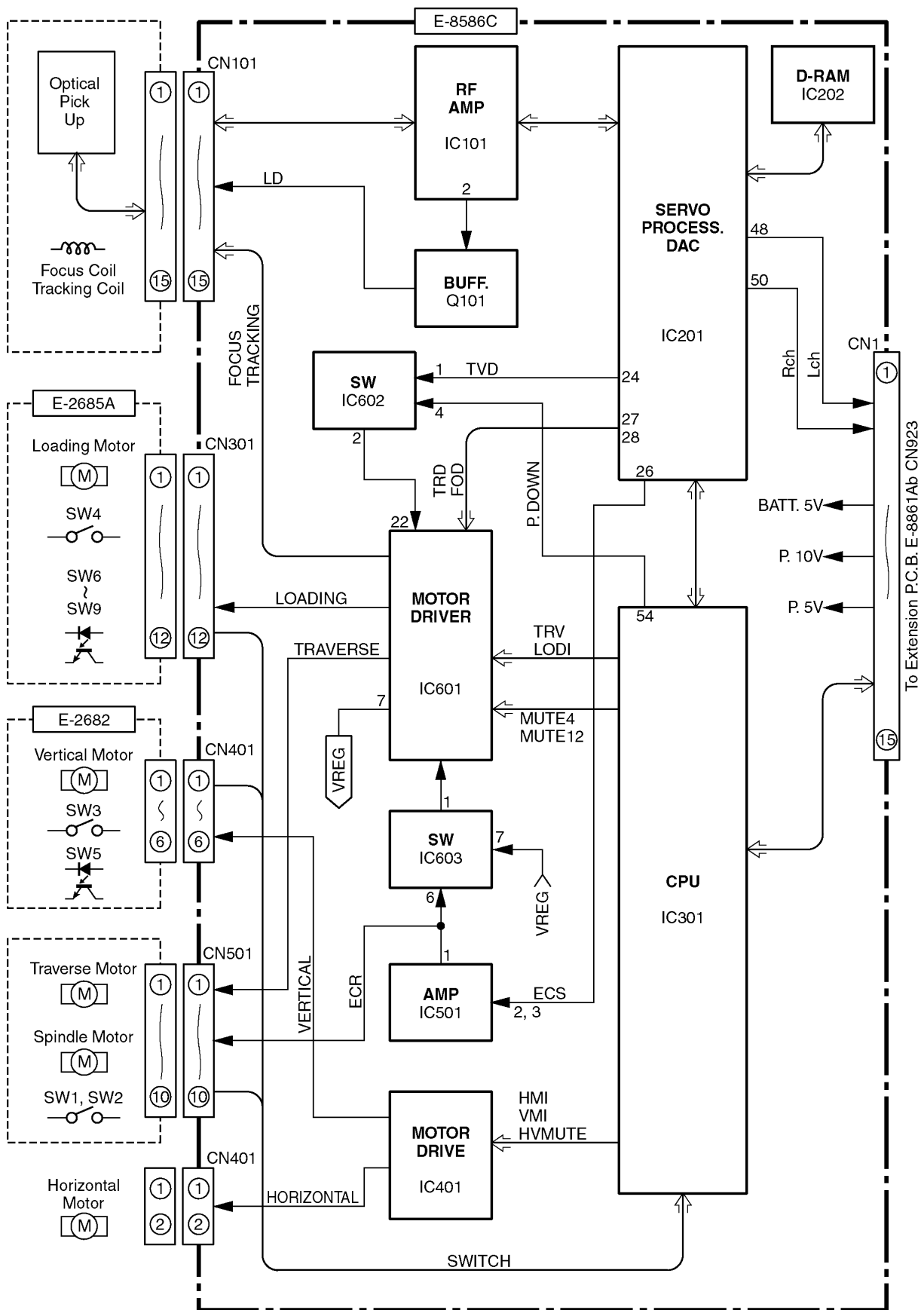
5 WIRING CONNECTIONS



6 BLOCK DIAGRAM (Main, Display, Tape Block)



7 BLOCK DIAGRAM (CD Servo Block)



8 TERMINALS DESCRIPTION

8.1. Main Block

IC601 : C2CBHG000069

Pin No.	Port	Description	I/O	(V)
1	BEEP	Beep output	O	0
2	IDC-ST/SP	CD.C start/stop	O	4.9
3	EVOL CLK	Electronic volume clock	O	0
4	EVOL DATA	Electronic volume data	O	0
5	SEC-LED	Security LED on/off	O	4.9
6	VOL A	Rotary encoder data	I	0.5
7	VOL B	Rotary encoder data	I	0.5
8	LCD-CLK	Shift clock for LCD data	O	0
9	LCD-DI	LCD data	O	5.0
10	LCD-DO	LCD data	I	0
11	RESET	Reset input	I	4.9
12	XT2	Crystal oscillator terminal	-	2.4
13	XT1	Crystal oscillator terminal	-	0.7
14	VSS	Ground	-	0
15	X2	Crystal oscillator terminal	-	2.3
16	X1	Crystal oscillator terminal	-	1.8
17	REGOFF	(Connecting to VDD)	-	4.9
18	REGC	(Connecting to VDD)	-	4.9
19	VDD	+5V power supply	-	4.9
20	VOL C	Rotary encoder data	I	4.8
21	VOL D	Rotary encoder data	I	0.5
22	LCD-CE	LCD driver enable	O	0
23	BOSE	(VDD pull-up)	I	4.9
24	SEC-CS	Security ROM chip select	O	0
25	SEC-CLK	Data shift clock for security ROM	O	0
26	SEC-DI	Serial data	I	0
27	SEC-DO	Serial data	O	0
28	SET-SEC1	(Ground pull-down)	-	0
29	SET-SEC2	(Ground pull-down)	-	0
30	SET-TIME	(VDD Pull-up)	-	4.9
31	P.CONT	COM8V power switch	O	4.8
32	ACC CNT	ACC 5V power switch	O	4.9
33	AMPCNT	Amp power control	O	4.9
34	LCD ON	LCD illumin. on/off	O	4.9
35	TUNER +B	Motor antenna power	O	4.9
36	PLL-CE	PLL chip select	O	0
37	PLL-DO	PLL data	O	0
38	PLL-CLK	Shift clock for PLL data	O	0
39	PLL-DI	PLL data	I	5.0
40	VSS	Ground	-	0
41	VDD	+5V power supply	-	4.9
42	AREA	(Ground pull-down)	-	0
43	ST-IND	FM stereo detection	I	0.3
44	CA.PON	Tape power control	O	4.9
45	CM.PON	Tape power control	O	4.9
46	M2	Main motor control	O	0
47	M1A	Loading motor control	O	0
48	M1B	Loading motor control	O	0
49	T.IN	Tape-in detection	I	0
50	MSM	MS gain control	O	4.9
51	A/B	Tape side detection	I	0
52	M2F	Main motor control	O	0
53	EQ(MTL)	Metal tape mode selection	O	4.9
54	F/R	Tape head change	O	0
55	DOLBY	Dolby NR on/off	O	4.9
56	T.LOAD	Tape loading detection	I	0
57	MS(PL/FF)	MS mode selection	O	0
58	MS	MS detection	I	0
59	REMO3/4	(VDD pull-up)	-	4.9
60	BUSOUT	Not used	-	-

61	NAVI-IN	(ACC5V pull-up)	-	4.9
62	NC	No connection	-	-
63	NC	No connection	-	-
64	NAVI-MUTE	Navi mute control	O	0
65	BIT1	Tape mode switch	I	4.6
66	END.A	Tape end signal	I	1.5
67	END.B	Tape end signal	I	2.4
68	BIT2	Tape mode switch	I	4.6
69	EQ	Metal/Normal switch	I	0
70	BIT3	Tape mode switch	I	0
71	NC	No connection	-	-
72	NC	No connection	-	-
73	IC/VPP	(Connecting to ground)	-	0
74	REMO	Remote control signal	O	5.0
75	SW.A	CD.C mute	O	0
76	SW.B	Not used	-	-
77	F-MUTE	Front mute	O	0
78	R-MUTE	Rear mute	O	0
79	NC	No connection	-	-
80	VSM	Phase diff. level detection	I	0.6
81	AMP MUTE	Not used	-	-
82	AVDD	+5V power supply	-	4.9
83	AVREF1	Analog reference voltage	I	5.0
84	AVSS	Ground	-	0
85	NC	(Connecting to ground)	-	0
86	NC	No connection	-	-
87	ACC-DET	ACC level detection	I	4.5
88	TAPE EJ	Tape eject SW	I	4.6
89	BUS.IN	Not used	-	4.8
90	GAIN	(+5V pull-up)	-	4.8
91	IDCEJECT	CD disc eject SW	I	4.7
92	BAT-DET	Battery level detection	I	4.5
93	EJ.INH	Tape/Disc eject SW	I	4.4
94	IDC-SI	CD.C serial data	O	4.0
95	RXD	Not used	-	0
96	TXD	Not used	-	4.9
97	IDC-CLK	Shift clock for CD.C data	O	4.9
98	IDC-SO	CD.C data	O	1.2
99	CD-RESET	CD.C reset	O	4.9
100	CDON	CD.C controller enable	O	4.9

Note :

Voltage measurements are with respect to ground, with a voltmeter (Internal resistance : 10M ohms.)

8.2. Display Block

IC901 : YEAMLC75853

Pin No.	Port	Description	I/O	(V)
1, 2	S1, 2	Disc LED on/off	O	0
3	S3	Not used	-	-
4-40	S4-40	LCD segment data	O	2.5
41-43	COM1-3	LCD common	O	2.5
44	S41	LCD segment data	O	2.5
45-49	KS2-6	Key strobe	O	0.9
50-53	KI1-4	Key data	I	0
54	KI5	(Connecting to ground)	-	0
55	TEST	(Connecting to ground)	-	0
56	VDD	+5V power supply	-	5.1
57	VDD1	LCD angle	-	3.3
58	VDD2	LCD angle	-	1.7
59	VSS	Ground	-	0
60	OSC	Oscillator terminal	-	3.9

61	DO	Key data output	O	4.1
62	CE	LCD driver chip enable	I	0
63	CL	Shift clock for LCD data	I	0
64	DI	LCD data input	I	0

8.3. CD Servo Block

IC201 : MN662783RPW

Pin No.	Port	Description	I/O	(V)
1	VDD	+5V power supply	-	5.0
2	D0	D-RAM data	I/O	2.3
3	D1	D-RAM data	I/O	1.8
4	/WE	D-RAM data write	O	4.9
5	/RAS	D-RAM row address strobe	O	3.4
6	D2	D-RAM data	I/O	0.8
7	D3	D-RAM data	I/O	0
8	/CAS0	D-RAM column address strobe	O	3.9
9	/CAS1	D-RAM column address strobe	O	0
10	A8	D-RAM address	O	0.6
11	A7	D-RAM address	O	1.1
12	A6	D-RAM address	O	0.7
13	A5	D-RAM address	O	0
14	A4	D-RAM address	O	1.1
15	A9	D-RAM address	O	0.4
16-18	A0	D-RAM address	O	1.0
19	A3	D-RAM address	O	0
20	VSS2	Ground	-	0
21	VDD2	+5V power supply	-	5.0
22,23	-	Not used	-	-
24	TVD	Traverse motor control	O	2.5
25	PC	Not used	-	-
26	ECS	Spindle motor control	O	2.4
27	TRD	Tracking coil drive	O	2.5
28	FOD	Focus coil drive	O	2.4
29	FBAL	Focus balance	O	1.9
30	TBAL	Tracking balance	O	3.0
31	VREF	Reference voltage	I	2.5
32	FE	Focus error	I	2.5
33	TE	Tracking error	I	2.5
34	RFENV	RF envelope	I	2.5
35	OFT	Off track signal	I	0
36	/RFDET	RF detecting signal	I	0
37	BDO	Drop-out signal	I	0
38	LDON	Laser on signal	O	4.5
39	ARF	RF signal	I	2.5
40	IREF	Reference current input	I	1.2
41	DRF	Bias for DSL	I	2.4
42	DSLFL	Loop filter for DSL	I/O	2.5
43	DSLFL2	Loop filter for DSL	I/O	2.2
44	PLLFL	Loop filter for PLL	I/O	1.4
45	VCOF	Not used	-	-
46	AVDD2	+5V power supply	-	5.0
47	AVSS2	Ground	-	0
48	OUTL	L channel output	O	2.3
49	AVSS1	Ground	-	0
50	OUTR	R channel output	O	2.3
51	AVDD1	+5V power supply	-	4.7
52-54	-	(Connecting to ground)	-	0
55	FLAG	Flag output	O	0
56	FCLK	Frame clock	O	0
57-59	-	Not used	-	-
60	TX	Not used	-	-
61	MCLK	Clock for I/F command	I	1.0
62	MDATA	Data for I/F command	I	3.1
63	MLD	I/F command load	I	5.0

64	BLKCK	Subcode block clock	O	0
65	SQCK	Ext. clock for sub code-Q	I	5.0
66	SUBQ	Code for sub. code-Q	O	3.8
67	DMUTE	Mute input	I	0
68	STAT	Status signal	O	5.0
69	/RST	Reset input	I	5.0
70	CSEL	(Connecting to ground)	-	0
71	PMCK	Clock output	O	2.5
72	SMCK	Clock output	O	2.5
73	SUBC	Serial data of sub code	O	0
74	SBCK	Shift clock for SUBC	I	0.6
75	/CLDCK	Not used	-	-
76	/TEST	(Connecting to VDD)	-	5.0
77	X1	Crystal oscillator	-	0.4
78	X2	Crystal oscillator	-	3.2
79	VDD1	+5V power supply	-	5.0
80	VSS1	Ground	-	0

IC301 : MN1873260AB4

Pin No.	Port	Description	I/O	(V)
1	VDD	+5V power supply	-	5.0
2	OSC2	Crystal oscillator	-	2.2
3	OSC1	Crystal oscillator	-	2.1
4	VSS	Ground	-	0
5	XI	(Connecting to ground)	-	0
6	XO	Not used	-	-
7	CM	(Connecting to ground)	-	0
8	VREFH	Reference voltage	I	5.0
9	SW13	Shutter SW	I	4.9
10	SW12	Horizontal origin	I	4.9
11	SW11	Clump SW	I	0
12	SW10	Play SW	I	0
13	SW4	Shutter SW	I	4.9
14	SW3	Tray origin SW	I	0
15	SW2	Inner SW	I	4.8
16	SW1	Outer SW	I	4.9
17	VREFL	(Connecting to Ground)	-	0
18	/RESET	Reset input	I	4.9
19	-	(Ground pull-down)	-	0
20	SCKM	Clock for serial data	I	5.0
21	SIM	CD changer serial data	I	1.3
22	SOM	CD changer serial data	O	4.3
23	SQCK	Ext. clock for sub. code-Q	O	5.0
24	SUBQ	Code for sub. code-Q	I	1.6
25	-	Not used	-	-
26	-	(Ground pull-down)	-	0
27	CD.ON	CD changer start/stop	I	5.0
28	-	Not used	-	-
29	BLKCK	Sub. code block clock	I	0
30	P.ON	In operation CPU	O	5.0
31	MUTE	Mute output	O	5.0
32	-	(Ground pull-down)	-	0
33	SENS	Servo status	O	0
34	CLVS	Servo status	O	5.0
35	FLOCK	Focus servo lock	O	0.2
36	TLOCK	Tracking servo lock	O	0
37	VMI	Horizontal motor control	O	2.5
38	HMI	Vertical motor control	O	0
39	HVMUTE	H/V motor mute	O	0
40-42	-	(Ground pull-down)	-	0
43	SW9	Disc-in (B) SW	I	0
44	SW8	Disc-in (L) SW	I	0
45	SW7	Disc-in (F) SW	I	0
46	SW6	Disc push SW	I	0
47	SW5	Tray high SW	I	4.5

48	BDO	Drop-out signal	I	0
49	DQSY	Not used	-	-
50	/RST	Reset output	O	5.0
51	STAT	Status signal	I	2.1
52	DMUTE	Mute output	O	0
53	XE	Not used	-	-
54	P.DOWN	Power down signal	O	0
55	-	No connection	-	-
56	MLD	I/F command load	O	5.0
57	MDATA	Data for I/F command	O	3.1
58	MCLK	Clock for I/F command	O	4.1
59	SPMT	Spindle mute	O	5.0
60	MUTE12	Focus/Tracking mute	O	0
61	MUTE4	Loading motor mute	O	4.8
62	LDOI	Loading motor control	I/O	2.5
63	TRV	Forced traverse control	I/O	2.4
64	SYNC	Not used	-	-

9 ALIGNMENT INSTRUCTIONS

9.1. Alignment Conditions

- Power Supply Voltage : DC13.2V
- Output Impedance : 4Ω
- Output Power : 0.5W
- Balance, Fader Control : center
- Bass, Treble Control : Center
- Dolby NR: OFF

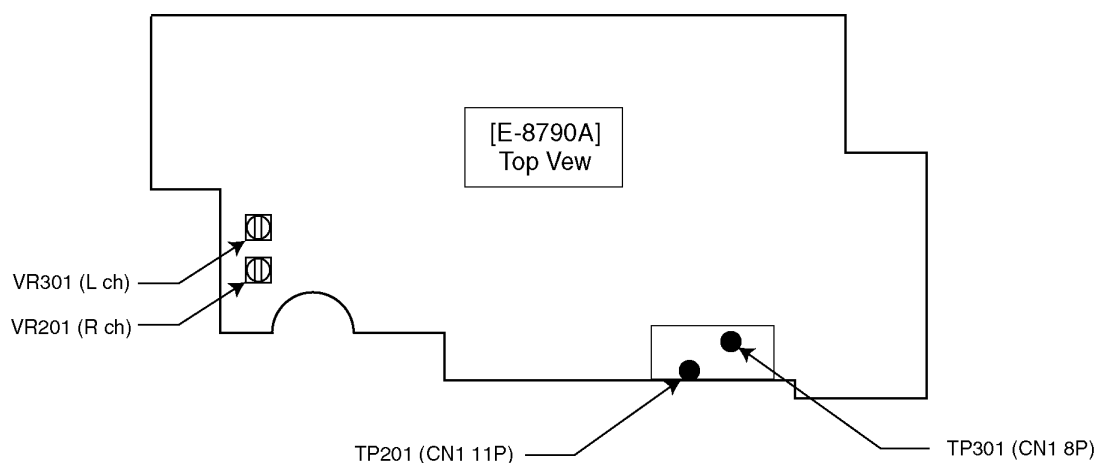
Note :

Do not align the FM/AM package block. When the package block is necessary, it will be supplied already aligned at the factory.

9.2. Dolby NR Alignment

Step	Alignment Item	Test Tape	VTVM Connection	Adjust	Remarks
(1)	DOLBY NR Rch	RFKZ0038	TP201	VR201	Adjust for 388mV \pm 1.0dB
(2)	DOLBY NR Lch	RFKZ0038	TP301	VR301	Adjust for 388mV \pm 1.0dB

10 ALIGNMENT POINTS



11 CD DISC CENTERING ALIGNMENT

- This adjustment is for assuring that compact discs will be placed in the center of the turntable.

<Adjustment Condition / Jig>

- Power Supply Voltage : 13.2V
- Test Disc : TCD-784M

<Adjustment Procedures>

1. Attach the adjusting screw to the upper chassis (See Figure 1.).
2. Insert the test CD (TCD-784M) into the disc No.1 position and play it.
3. After checking whether the disc is centered on the turntable, turn the adjusting screw unit it is in the center.

<Check Items>

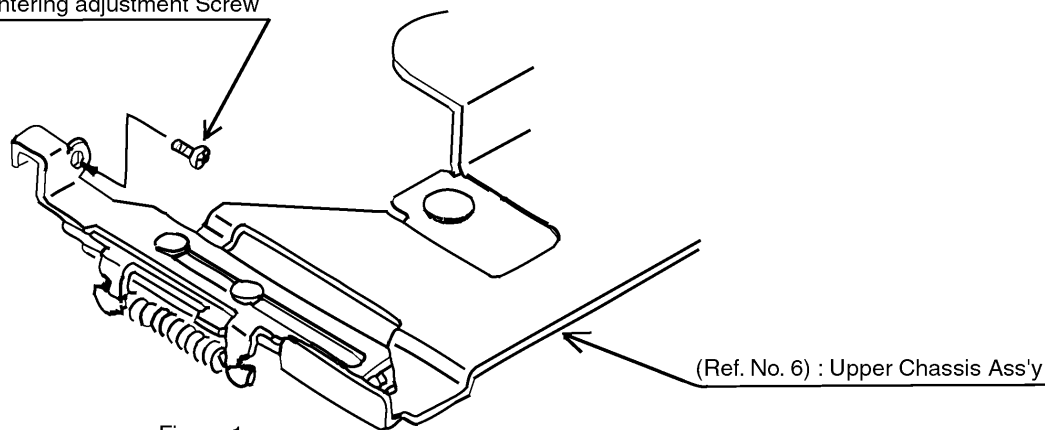
- Check that the disc is correctly centered.
- Check that the disc is securely clamped.
- Check that no abnormal noise is produced when clamping the disc.

[Directions of Turning the Adjusting Screw]

- CD stops before its proper position : Turn the screw counterclockwise.
- CD overruns : Turn the screw clockwise.

4. After the adjustment, lock the screw.

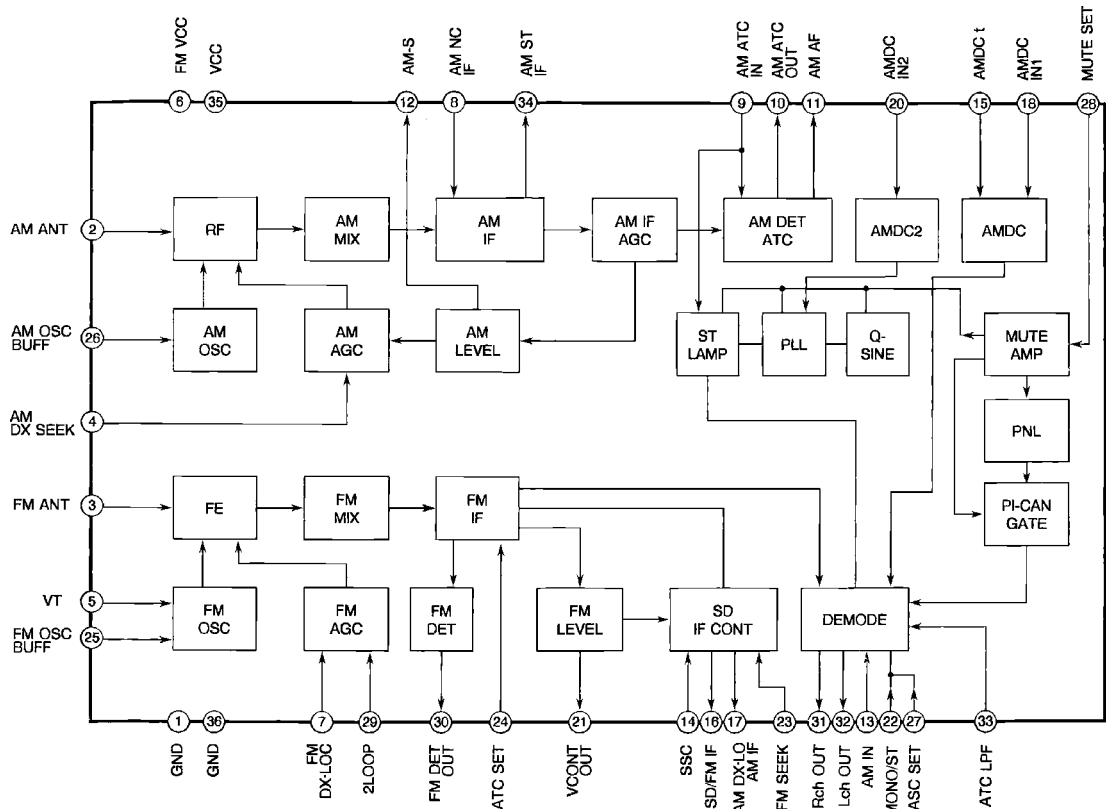
(Ref. No.156) : Centering adjustment Screw



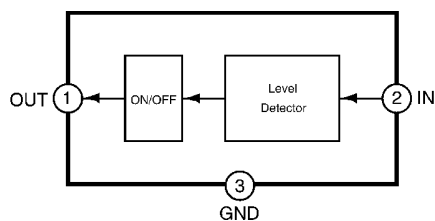
<Figure 1>

12 PACKAGE AND IC BLOCK DIAGRAM

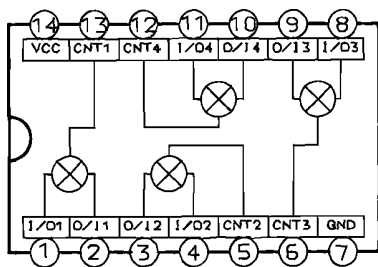
12.1. Main Block



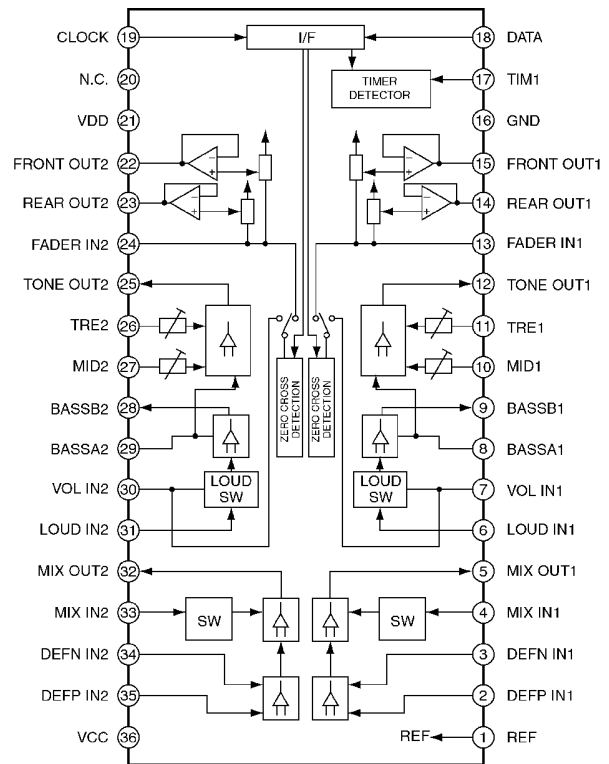
PK50 : YEP0PTA514B0



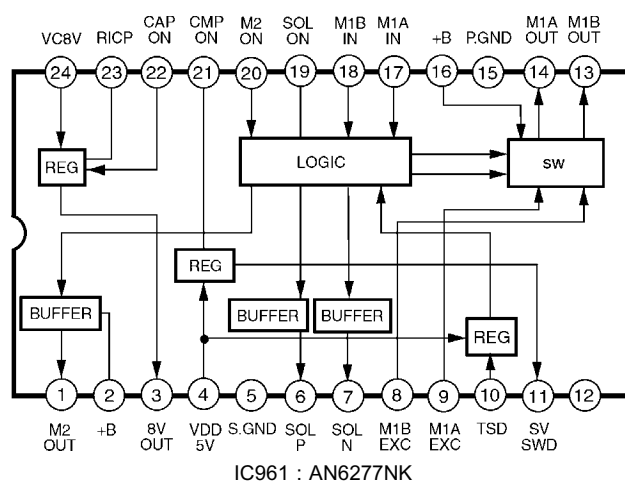
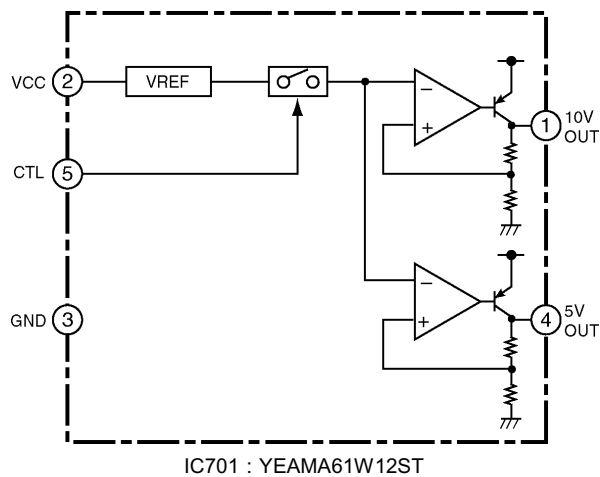
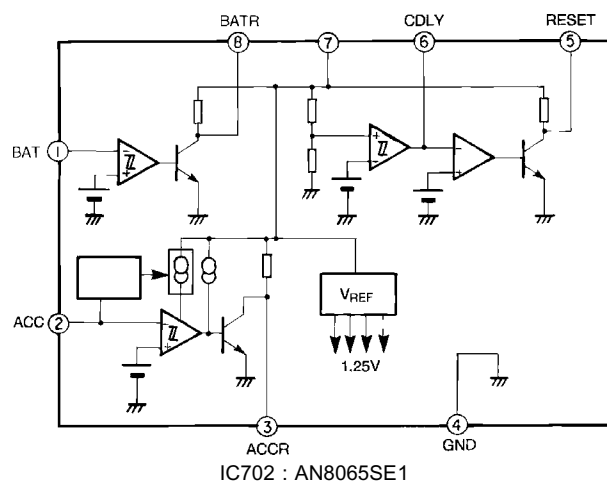
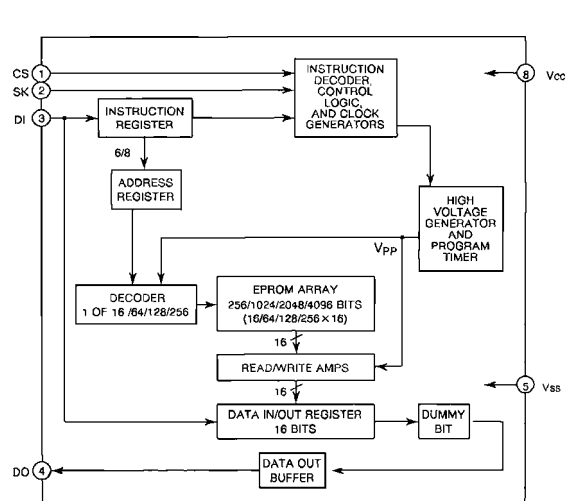
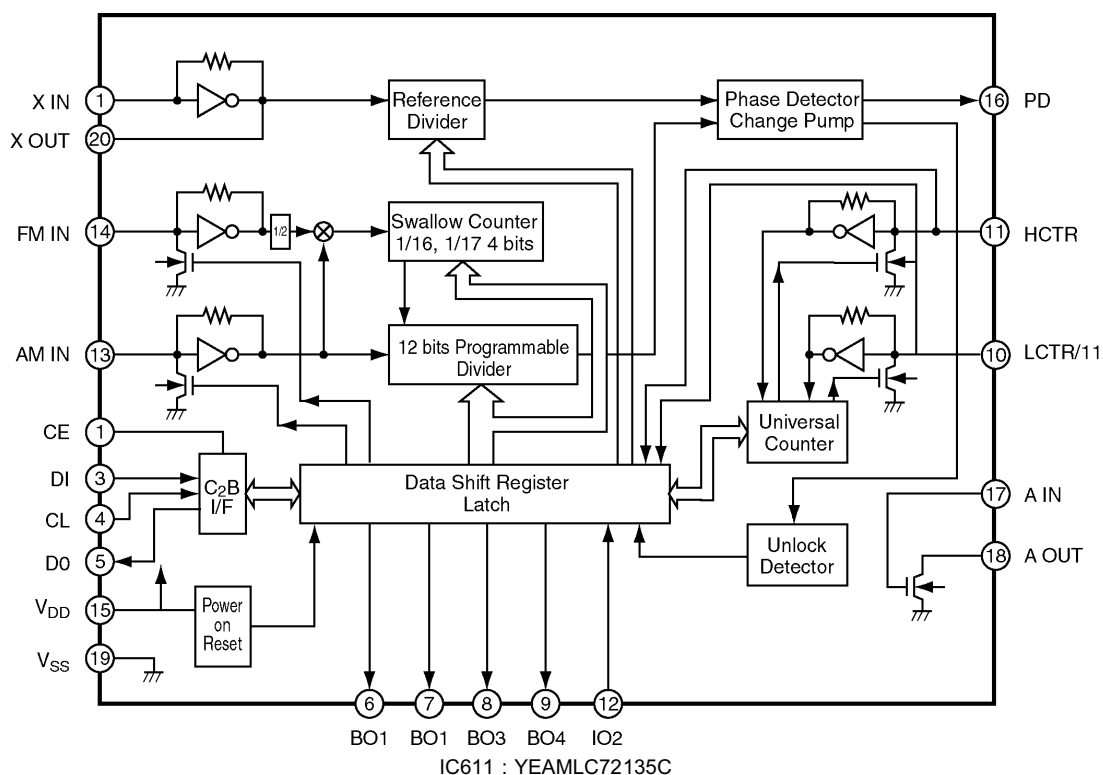
IC602 : MN1382KTX



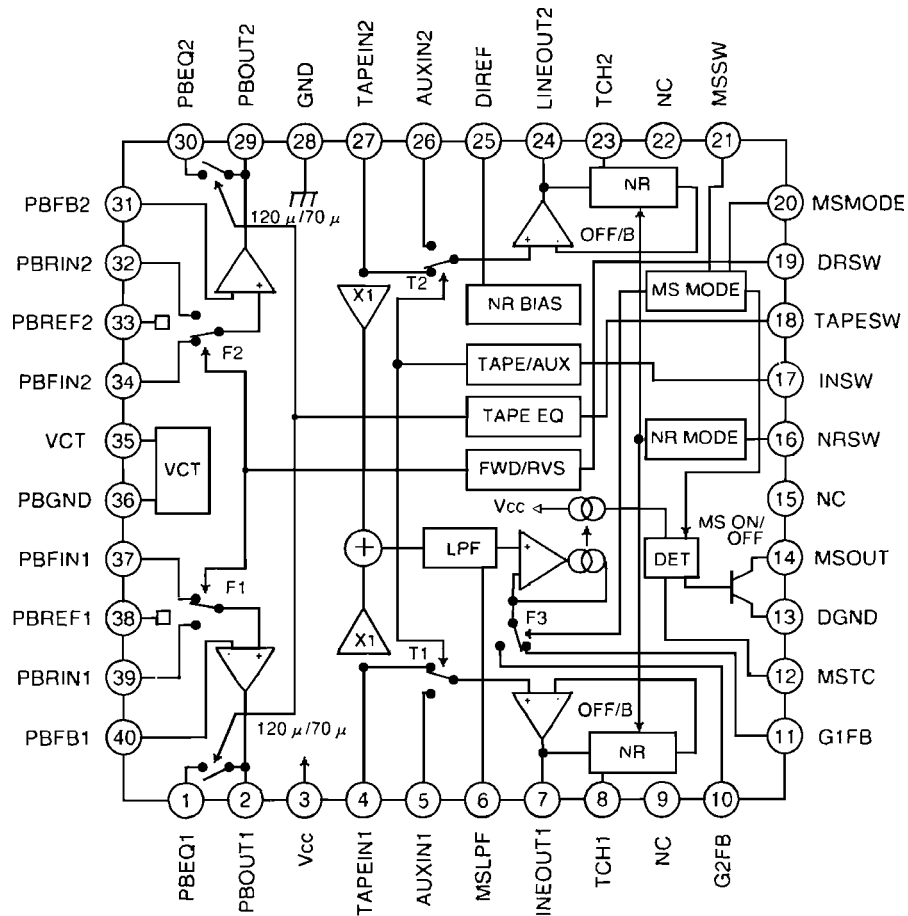
IC205 : C0JBAS000030



IC201 : C1BB00000284

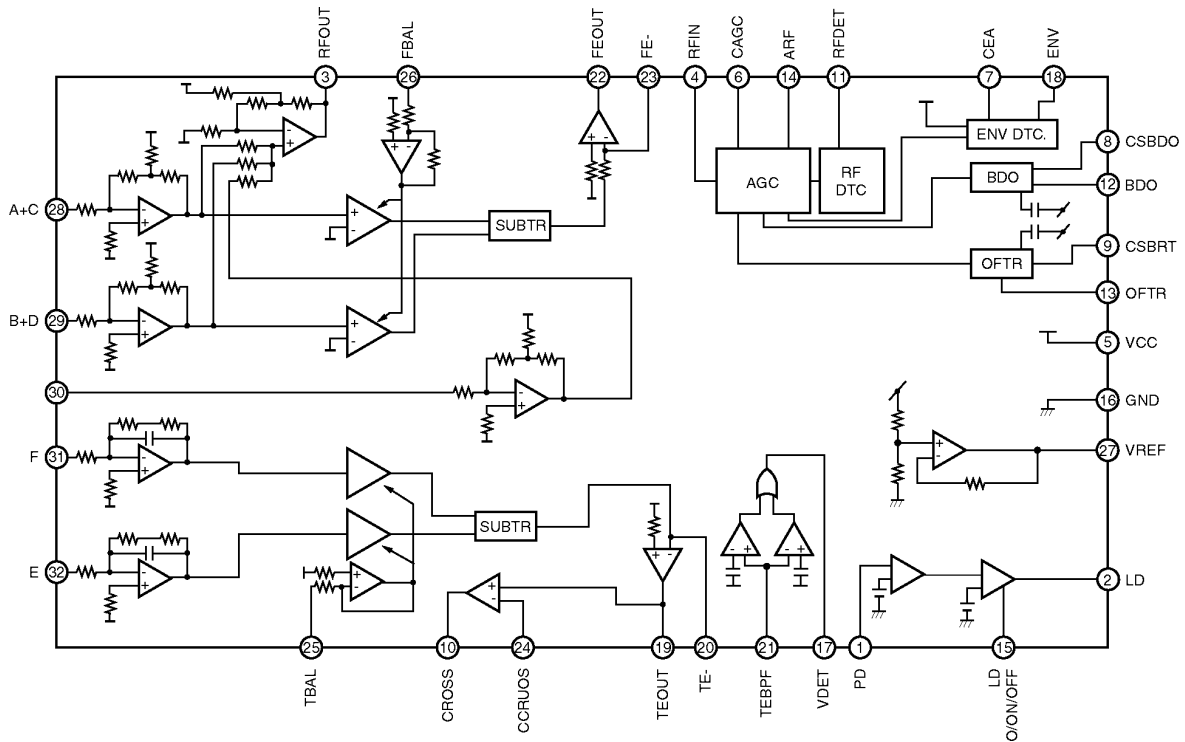


12.2. Tape Block

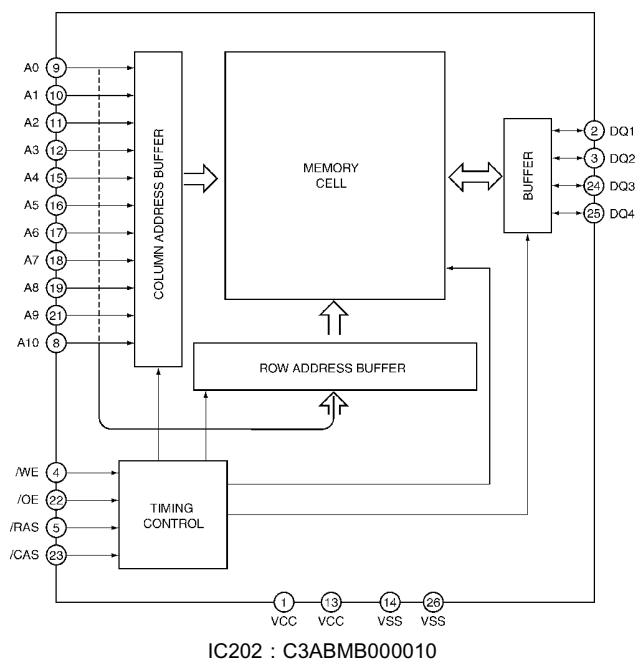
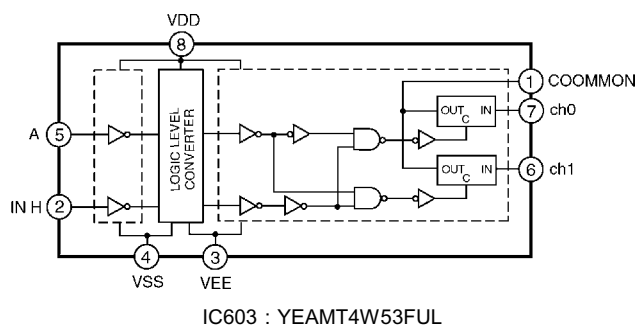


IC1 : YEAMCXA2565Q

12.3. CD Servo Block



IC101 : YEAMBA6354BF



13 REPLACEMENT PARTS LIST

Notes :

1. Be sure to make your orders of replacement parts according to this list.
2. Important safety notice: Components, identified by \triangle mark have special characteristics important for safety. When replacing any of these components, use only manufacturer's specified parts.
3. Location keys in the remarks column indicates the general location of the parts shown in the exploded drawing, as in a road map.
4. The marking (RTL) indicates that Retention Time is limited for this item. After the discontinuation of assembly in production, the item will continue to be available for a specific period of time. The retention period of availability is dependent on the type of assembly, and in accordance with the laws governing part and product retention. After the end of this period, the assembly will no longer be available.
5. "MCC" marks in remarks column are indicated supply parts of Matsushita Communication Industrial Corp. of America (MCC).

Ref. No.	Part No.	Part Name & Description	Remarks
[E6857A] Main Block			
IC's and TRANSISTORS			
IC201	C1BB00000284	IC	
IC202	C0ABC0000038	IC	
IC205	C0JBAS000030	IC	
IC302	C0ABC0000038	IC	
IC601	C2CBHG000069	IC	
IC602	MN1382KTX	IC	
IC603	C3EBCG000037	IC	
IC611	YEAMLC72135C	IC	
IC612	C0ABBB000179	IC	
IC701	YEAMA61W12ST	IC	
IC702	AN8065SE1	IC	
IC770	C0ABBB000179	IC	
IC921	C0ABBB000179	IC	
IC961	AN6277NK	IC	
PK50	YEP0PTA514B0	Electronic Tuner	
Q51	YEANC114EKT	Transistor	
Q276	YEANC323TKT	Transistor	
Q277	YEANC323TKT	Transistor	
Q278	YEANA124EKT	Transistor	
Q376	YEANC323TKT	Transistor	
Q377	YEANC323TKT	Transistor	
Q378	YEANA124EKT	Transistor	
Q441	YEANC323TKT	Transistor	
Q442	YEANA124EKT	Transistor	
Q541	YEANC323TKT	Transistor	
Q602	B1GBCFJN0005	Transistor	
Q704	2SB1398QTA	Transistor	
Q705	B1GBCFJN0005	Transistor	
Q707	2SD2139TA	Transistor	
Q721	YEANBP1F3PT	Transistor	
Q722	YEANBP1F3PT	Transistor	
Q731	2SB1398QTA	Transistor	
Q732	B1GBCFJN0005	Transistor	
Q745	B1BBAC000007	Transistor	
Q751	2SB1398QTA	Transistor	
Q752	B1GDJEGJ0002	Transistor	
Q753	YEAN2SD1856	Transistor	
Q754	2SD0601AHR	Transistor	
Q755	YEANBP1F3PT	Transistor	
Q756	YEANC114EKT	Transistor	
Q757	2SB1398QTA	Transistor	

Ref. No.	Part No.	Part Name & Description	Remarks
Q758	B1GDJEGJ0002	Transistor	
Q772	2SD1119TX	Transistor	
Q773	2SB1398QTA	Transistor	
Q774	B1GBCFJN0005	Transistor	
Q921	B1ACJC000004	Transistor	
Q922	B1GBCFJN0005	Transistor	
DIODES			
D103	MA142WKT	Diode	
D155	MA4X159A0L	Diode	
D230	MA4X159A0L	Diode	
D258	MA153TX	Diode	
D259	MA153TX	Diode	
D278	MA153TX	Diode	
D279	MA153TX	Diode	
D358	MA153TX	Diode	
D359	MA153TX	Diode	
D378	MA153TX	Diode	
D379	MA153TX	Diode	
D601	MA142WATX	Diode	
D701	YEADZSA5A27F	Diode	
D702	YEADSR1544TL	Diode	
D703	YEADDEC10DS1	Diode	
D704	MA158TX	Diode	
D706	YEADRD91M1T2	Diode	
D707	YEADRD47M2T1	Diode	
D741	YEADRD56M3T1	Diode	
D751	YEADRD91M2T1	Diode	
D752	MA142WKT	Diode	
D772	B0BC9R900009	Diode	
D911	MA151KTX	Diode	
D961	MA142WATX	Diode	
CAPACITORS			
C51	YECUS1H102KX	Ceramic, 0.001 μ F 50WV	
C52	YECUS1H103KX	Ceramic, 0.01 μ F 50WV	
C53	ECEA1AKA221I	Electrolytic, 220 μ F 10WV	
C54	YECUS1C154KX	Ceramic, 0.15 μ F 16WV	
C55	YECUS1H153KX	Ceramic, 0.015 μ F 50WV	
C56	YECUS1H473KX	Ceramic, 0.047 μ F 50WV	
C57	YECUS1H393KX	Ceramic, 0.039 μ F 50WV	
C58	ECEA1CKA100I	Electrolytic, 10 μ F 16WV	
C59	YECUS1E223KX	Ceramic, 0.022 μ F 25WV	
C61	YECUS1H101JM	Ceramic, 100PF 50WV	
C62	YECUS1H102KX	Ceramic, 0.001 μ F 50WV	
C63	YECUS1H151JM	Ceramic, 150PF 50WV	
C65	YECUS1E333KX	Ceramic, 0.033 μ F 25WV	
C66	YECUS1E333KX	Ceramic, 0.033 μ F 25WV	
C67	YECUS1H103KX	Ceramic, 0.01 μ F 50WV	
C68	ECA1AM221I	Electrolytic, 220 μ F 10WV	
C69	YECUS1E223KX	Ceramic, 0.022 μ F 25WV	
C71	F1J1H2R0A007	Ceramic, 2PF 50WV	
C151	YECUS1C104KX	Ceramic, 0.1 μ F 16WV	
C155	YECUS1H332KX	Ceramic, 0.0033 μ F 50WV	
C156	YECUS1H332KX	Ceramic, 0.0033 μ F 50WV	
C208	ECEA1HBD010I	Electrolytic, 1 μ F 50WV	
C209	ECEA1HBD2R2I	Electrolytic, 2.2 μ F 50WV	
C210	ECEA1HBD010I	Electrolytic, 1 μ F 50WV	
C233	ECEA1HSN2R2I	Electrolytic, 2.2 μ F 50WV	
C237	YECUS1C683KX	Ceramic, 0.068 μ F 16WV	
C238	YECUS1C683KX	Ceramic, 0.068 μ F 16WV	
C239	YECUS1H103KX	Ceramic, 0.01 μ F 50WV	
C240	ECEA1HBD2R2I	Electrolytic, 2.2 μ F 50WV	
C251	YECUV1C225KX	Ceramic, 2.2 μ F 16WV	
C252	YECUS1H151JM	Ceramic, 150PF 50WV	
C253	YECUS1H151JM	Ceramic, 150PF 50WV	
C254	ECEA1HKS2R2I	Electrolytic, 2.2 μ F 50WV	
C255	ECEA1HKS010I	Electrolytic, 1 μ F 50WV	
C256	ECEA1AKA220I	Electrolytic, 22 μ F 10WV	
C257	YECUS1H103KX	Ceramic, 0.01 μ F 50WV	
C258	ECEA1CKS100I	Electrolytic, 10 μ F 16WV	

17

HONDA / CQ-EH9160A

Ref. No.	Part No.	Part Name & Description	Remarks
R56	ERJ6GEYJ183	Chip, 18k Ω 1/10W	
R57	ERJ6GEYJ103	Chip, 10k Ω 1/10W	
R58	ERJ6GEYJ183	Chip, 18k Ω 1/10W	
R60	ERJ6GEYJ683	Chip, 68k Ω 1/10W	
R61	ERJ6GEYJ104	Chip, 100k Ω 1/10W	
R62	ERJ6GEYJ101	Chip, 100 Ω 1/10W	
R63	ERJ6GEYJ123	Chip, 12k Ω 1/10W	
R64	ERJ6GEYJ823	Chip, 82k Ω 1/10W	
R65	ERJ6GEYJ123	Chip, 12k Ω 1/10W	
R66	ERJ6GEYJ104	Chip, 100k Ω 1/10W	
R155	ERJ6GEYJ272	Chip, 2.7k Ω 1/10W	
R156	ERJ6GEYJ272	Chip, 2.7k Ω 1/10W	
R157	ERJ6GEYJ103	Chip, 10k Ω 1/10W	
R158	ERJ6GEYJ103	Chip, 10k Ω 1/10W	
R207	ERJ6GEYJ682	Chip, 6.8k Ω 1/10W	
R208	ERJ6GEYJ822	Chip, 8.2k Ω 1/10W	
R209	ERJ6GEYJ203	Chip, 20k Ω 1/10W	
R210	ERJ6GEYJ203	Chip, 20k Ω 1/10W	
R230	ERJ6GEYJ103	Chip, 10k Ω 1/10W	
R248	ERJ6GEYJ562	Chip, 5.6k Ω 1/10W	
R249	ERJ6GEYJ102	Chip, 1k Ω 1/10W	
R250	ERJ6GEYJ103	Chip, 10k Ω 1/10W	
R251	ERJ6GEYJ105	Chip, 1M Ω 1/10W	
R252	ERJ6GEYJ104	Chip, 100k Ω 1/10W	
R253	ERJ6GEYJ103	Chip, 10k Ω 1/10W	
R254	ERJ6GEYJ100	Chip, 10 Ω 1/10W	
R255	ERJ6GEYJ153	Chip, 15k Ω 1/10W	
R256	ERJ6GEYJ682	Chip, 6.8k Ω 1/10W	
R257	ERJ6GEYJ103	Chip, 10k Ω 1/10W	
R258	ERJ6GEYJ153	Chip, 15k Ω 1/10W	
R259	ERJ6GEYJ100	Chip, 10 Ω 1/10W	
R260	ERJ6GEYJ103	Chip, 10k Ω 1/10W	
R262	ERJ6GEYJ104	Chip, 100k Ω 1/10W	
R268	ERJ6GEYJ562	Chip, 5.6k Ω 1/10W	
R269	ERJ6GEYJ102	Chip, 1k Ω 1/10W	
R270	ERJ6GEYJ103	Chip, 10k Ω 1/10W	
R271	ERJ6GEYJ103	Chip, 10k Ω 1/10W	
R272	ERJ6GEYJ104	Chip, 100k Ω 1/10W	
R273	ERJ6GEYJ103	Chip, 10k Ω 1/10W	
R274	ERJ6GEYJ100	Chip, 10 Ω 1/10W	
R275	ERJ6GEYJ153	Chip, 15k Ω 1/10W	
R276	ERJ6GEYJ682	Chip, 6.8k Ω 1/10W	
R277	ERJ6GEYJ103	Chip, 10k Ω 1/10W	
R278	ERJ6GEYJ153	Chip, 15k Ω 1/10W	
R279	ERJ6GEYJ100	Chip, 10 Ω 1/10W	
R282	ERJ6GEYJ104	Chip, 100k Ω 1/10W	
R307	ERJ6GEYJ682	Chip, 6.8k Ω 1/10W	
R308	ERJ6GEYJ822	Chip, 8.2k Ω 1/10W	
R309	ERJ6GEYJ203	Chip, 20k Ω 1/10W	
R310	ERJ6GEYJ203	Chip, 20k Ω 1/10W	
R330	ERJ6GEYJ103	Chip, 10k Ω 1/10W	
R348	ERJ6GEYJ562	Chip, 5.6k Ω 1/10W	
R349	ERJ6GEYJ102	Chip, 1k Ω 1/10W	
R350	ERJ6GEYJ103	Chip, 10k Ω 1/10W	
R351	ERJ6GEYJ105	Chip, 1M Ω 1/10W	
R352	ERJ6GEYJ104	Chip, 100k Ω 1/10W	
R353	ERJ6GEYJ103	Chip, 10k Ω 1/10W	
R354	ERJ6GEYJ100	Chip, 10 Ω 1/10W	
R355	ERJ6GEYJ153	Chip, 15k Ω 1/10W	
R356	ERJ6GEYJ682	Chip, 6.8k Ω 1/10W	
R357	ERJ6GEYJ103	Chip, 10k Ω 1/10W	
R358	ERJ6GEYJ153	Chip, 15k Ω 1/10W	
R359	ERJ6GEYJ100	Chip, 10 Ω 1/10W	
R360	ERJ6GEYJ103	Chip, 10k Ω 1/10W	
R362	ERJ6GEYJ104	Chip, 100k Ω 1/10W	
R368	ERJ6GEYJ562	Chip, 5.6k Ω 1/10W	
R369	ERJ6GEYJ102	Chip, 1k Ω 1/10W	
R370	ERJ6GEYJ103	Chip, 10k Ω 1/10W	
R371	ERJ6GEYJ103	Chip, 10k Ω 1/10W	
R372	ERJ6GEYJ104	Chip, 100k Ω 1/10W	
R373	ERJ6GEYJ103	Chip, 10k Ω 1/10W	
R374	ERJ6GEYJ100	Chip, 10 Ω 1/10W	
R375	ERJ6GEYJ153	Chip, 15k Ω 1/10W	

Ref. No.	Part No.	Part Name & Description	Remarks
R376	ERJ6GEYJ682	Chip, 6.8k Ω 1/10W	
R377	ERJ6GEYJ103	Chip, 10k Ω 1/10W	
R378	ERJ6GEYJ153	Chip, 15k Ω 1/10W	
R379	ERJ6GEYJ100	Chip, 10 Ω 1/10W	
R382	ERJ6GEYJ104	Chip, 100k Ω 1/10W	
R441	ERJ6GEYJ152	Chip, 1.5k Ω 1/10W	
R442	ERJ6GEYJ223	Chip, 22k Ω 1/10W	
R443	ERJ6GEYJ123	Chip, 12k Ω 1/10W	
R444	ERJ6GEYJ123	Chip, 12k Ω 1/10W	
R541	ERJ6GEYJ152	Chip, 1.5k Ω 1/10W	
R542	ERJ6GEYJ223	Chip, 22k Ω 1/10W	
R543	ERJ6GEYJ123	Chip, 12k Ω 1/10W	
R544	ERJ6GEYJ123	Chip, 12k Ω 1/10W	
R601	ERJ6GEYJ102	Chip, 1k Ω 1/10W	
R602	ERJ6GEYJ102	Chip, 1k Ω 1/10W	
R603	ERJ6GEYJ684	Chip, 680k Ω 1/10W	
R604	ERJ6GEY0R00	Chip, 0 Ω 1/10W	
R618	ERJ6GEYJ102	Chip, 1k Ω 1/10W	
R620	ERJ6GEYJ473	Chip, 47k Ω 1/10W	
R622	ERJ6GEYJ473	Chip, 47k Ω 1/10W	
R623	ERJ6GEYJ473	Chip, 47k Ω 1/10W	
R625	ERJ6GEYJ473	Chip, 47k Ω 1/10W	
R627	ERJ6GEYJ473	Chip, 47k Ω 1/10W	
R630	ERJ6GEY0R00	Chip, 0 Ω 1/10W	
R632	ERJ6GEYJ473	Chip, 47k Ω 1/10W	
R633	ERJ6GEYJ102	Chip, 1k Ω 1/10W	
R635	ERJ6GEYJ473	Chip, 47k Ω 1/10W	
R636	ERJ6GEYJ473	Chip, 47k Ω 1/10W	
R641	ERJ6GEYJ473	Chip, 47k Ω 1/10W	
R642	ERJ6GEYJ473	Chip, 47k Ω 1/10W	
R643	ERJ6GEYJ104	Chip, 100k Ω 1/10W	
R645	ERJ6GEYJ104	Chip, 100k Ω 1/10W	
R646	ERJ6GEYJ473	Chip, 47k Ω 1/10W	
R647	ERJ6GEYJ473	Chip, 47k Ω 1/10W	
R648	ERJ6GEYJ473	Chip, 47k Ω 1/10W	
R649	ERJ6GEYJ473	Chip, 47k Ω 1/10W	
R650	ERJ6GEYJ152	Chip, 1.5k Ω 1/10W	
R651	ERJ6GEYJ152	Chip, 1.5k Ω 1/10W	
R654	ERJ6GEYJ152	Chip, 1.5k Ω 1/10W	
R655	ERJ6GEYJ393	Chip, 39k Ω 1/10W	
R656	ERJ6GEYJ472	Chip, 4.7k Ω 1/10W	
R657	ERJ6GEYJ103	Chip, 10k Ω 1/10W	
R658	ERJ6GEYJ151	Chip, 150 Ω 1/10W	
R667	ERJ6GEYJ331	Chip, 330 Ω 1/10W	
R691	ERJ8GEYJ561V	Chip, 560 Ω 1/8W	
R701	ERJ8GEYJ472V	Chip, 4.7k Ω 1/8W	
R702	ERJ6GEYJ333	Chip, 33k Ω 1/10W	
R703	ERJ8GEYJ102V	Chip, 1k Ω 1/8W	
R705	ERJ8GEYJ2R2V	Chip, 2.2 Ω 1/8W	
R706	ERJ8GEYJ2R2V	Chip, 2.2 Ω 1/8W	
R708	ERJ8GEYJ391V	Chip, 390 Ω 1/8W	
R709	ERJ6GEYJ331	Chip, 330 Ω 1/10W	
R710	ERJ8GEYJ820V	Chip, 82 Ω 1/8W	
R712	ERJ6GEYJ331	Chip, 330 Ω 1/10W	
R715	ERJ6GEYJ274	Chip, 270k Ω 1/10W	
R716	ERJ6GEYJ433	Chip, 43k Ω 1/10W	
R717	ERJ6GEYJ223	Chip, 22k Ω 1/10W	
R718	ERJ6GEYJ472	Chip, 4.7k Ω 1/10W	
R719	ERJ8GEYJ472V	Chip, 4.7k Ω 1/8W	
R720	ERJ8GEYJ472V	Chip, 4.7k Ω 1/8W	
R721	ERJ6GEYJ821	Chip, 820 Ω 1/10W	
R722	ERJ6GEYJ681	Chip, 680 Ω 1/10W	
R724	ERJ6GEYJ102	Chip, 1k Ω 1/10W	
R725	ERJ6GEYJ472	Chip, 4.7k Ω 1/10W	
R732	ERJ8GEYJ122V	Chip, 1.2k Ω 1/8W	
R733	ERJ6GEYJ103	Chip, 10k Ω 1/10W	
R734	ERJ8GEYJ122V	Chip, 1.2k Ω 1/8W	
R744	ERJ8GEYJ6R8V	Chip, 6.8 Ω 1/8W	
R745	ERJ6GEYJ183	Chip, 18k Ω 1/10W	
R749	ERJ6GEY0R00	Chip, 0 Ω 1/10W	
R751	ERJ6GEYJ473	Chip, 47k Ω 1/10W	
R752	ERJ8GEYJ152V	Chip, 1.5k Ω 1/8W	
R753	ERJ8GEYJ152V	Chip, 1.5k Ω 1/8W	

Ref. No.	Part No.	Part Name & Description	Remarks
R754	ERJ8GEYJ681V	Chip, 680 Ω 1/8W	
R755	ERJ6GEYJ182	Chip, 1.8k Ω 1/10W	
R756	ERJ6GEYJ223	Chip, 22k Ω 1/10W	
R757	ERJ6GEYJ152	Chip, 1.5k Ω 1/10W	
R758	ERJ6GEYJ123	Chip, 12k Ω 1/10W	
R759	ERJ6GEYJ473	Chip, 47k Ω 1/10W	
R760	ERJ6GEYJ681	Chip, 680 Ω 1/10W	
R761	ERJ8GEYJ5R6V	Chip, 5.6 Ω 1/8W	
R762	ERJ8GEYJ6R8V	Chip, 6.8 Ω 1/8W	
R763	ERJ8GEYJ4R7V	Chip, 4.7 Ω 1/8W	
R764	ERJ8GEYJ4R7V	Chip, 4.7 Ω 1/8W	
R766	ERJ6GEYJ473	Chip, 47k Ω 1/10W	
R767	ERJ8GEYJ4R7V	Chip, 4.7 Ω 1/8W	
R768	ERJ8GEYJ4R7V	Chip, 4.7 Ω 1/8W	
R771	ERJ6GEYJ103	Chip, 10k Ω 1/10W	
R772	ERJ6GEYJ123	Chip, 12k Ω 1/10W	
R773	ERJ8GEYJ220V	Chip, 22 Ω 1/8W	
R774	ERJ8GEYJ152V	Chip, 1.5k Ω 1/8W	
R775	ERJ8GEYJ392V	Chip, 3.9k Ω 1/8W	
R776	ERJ8GEYJ392V	Chip, 3.9k Ω 1/8W	
R784	ERJ6GEYJ473	Chip, 47k Ω 1/10W	
R785	ERJ6GEYJ473	Chip, 47k Ω 1/10W	
R786	ERJ6GEYJ473	Chip, 47k Ω 1/10W	
R787	ERJ6GEYJ473	Chip, 47k Ω 1/10W	
R788	ERJ6GEYJ102	Chip, 1k Ω 1/10W	
R789	ERJ6GEYJ122	Chip, 1.2k Ω 1/10W	
R790	ERJ6GEYJ222	Chip, 2.2k Ω 1/10W	
R791	ERJ6GEYJ222	Chip, 2.2k Ω 1/10W	
R792	ERJ6GEYJ103	Chip, 10k Ω 1/10W	
R793	ERJ6GEYJ103	Chip, 10k Ω 1/10W	
R794	ERJ6GEYJ472	Chip, 4.7k Ω 1/10W	
R795	ERJ6GEYJ473	Chip, 47k Ω 1/10W	
R796	ERJ6GEYJ222	Chip, 2.2k Ω 1/10W	
R797	ERJ6GEYJ222	Chip, 2.2k Ω 1/10W	
R798	ERJ6GEYJ103	Chip, 10k Ω 1/10W	
R799	ERJ6GEYJ123	Chip, 12k Ω 1/10W	
R923	ERJ6GEYJ473	Chip, 47k Ω 1/10W	
R924	ERJ6GEY0R00	Chip, 0 Ω 1/10W	
R929	ERJ8GEYJ391V	Chip, 390 Ω 1/8W	
R963	ERJ8GEYJ3R3V	Chip, 3.3 Ω 1/8W	
R964	ERJ6GEYJ473	Chip, 47k Ω 1/10W	
R967	ERJ8GEYJ3R3V	Chip, 3.3 Ω 1/8W	
R968	ERJ6GEYJ473	Chip, 47k Ω 1/10W	
R969	ERJ6GEYJ473	Chip, 47k Ω 1/10W	
R970	ERJ6GEYJ472	Chip, 4.7k Ω 1/10W	
R971	ERJ6GEYJ472	Chip, 4.7k Ω 1/10W	
CONNECTORS			
CN701	YEAEMX5P20L	Connector, 20P	
CN901	K1KA10B00162	Connector, 10P	
CN902	K1KA10B00162	Connector, 10P	
CN921	YEAEX623214S	Connector, 14P	
CN961	YEAEX9604S17S	Connector, 17P	
CN962	YEAEX0110TKAG	Connector, 10P	
COILS			
J601	YELTBLM21A10	Coil	
L51	YELT03N1R8JT	Coil	
L52	YELT03NR82JT	Coil	
L53	YELT03N3R3JT	Coil	
L601	YELT03N5R6KT	Coil	
L602	J0JCC00000030	Coil	
L603	YELTBLM21A10	Coil	
L604	YELTBLM21A10	Coil	
L605	YELT03N5R6KT	Coil	
L606	J0JCC00000030	Coil	
L701	G0B750J00001	Coil	
L921	YELT03N330JT	Coil	
CRYSTALS			
XL601	YEXL49U1258T	Crystal	

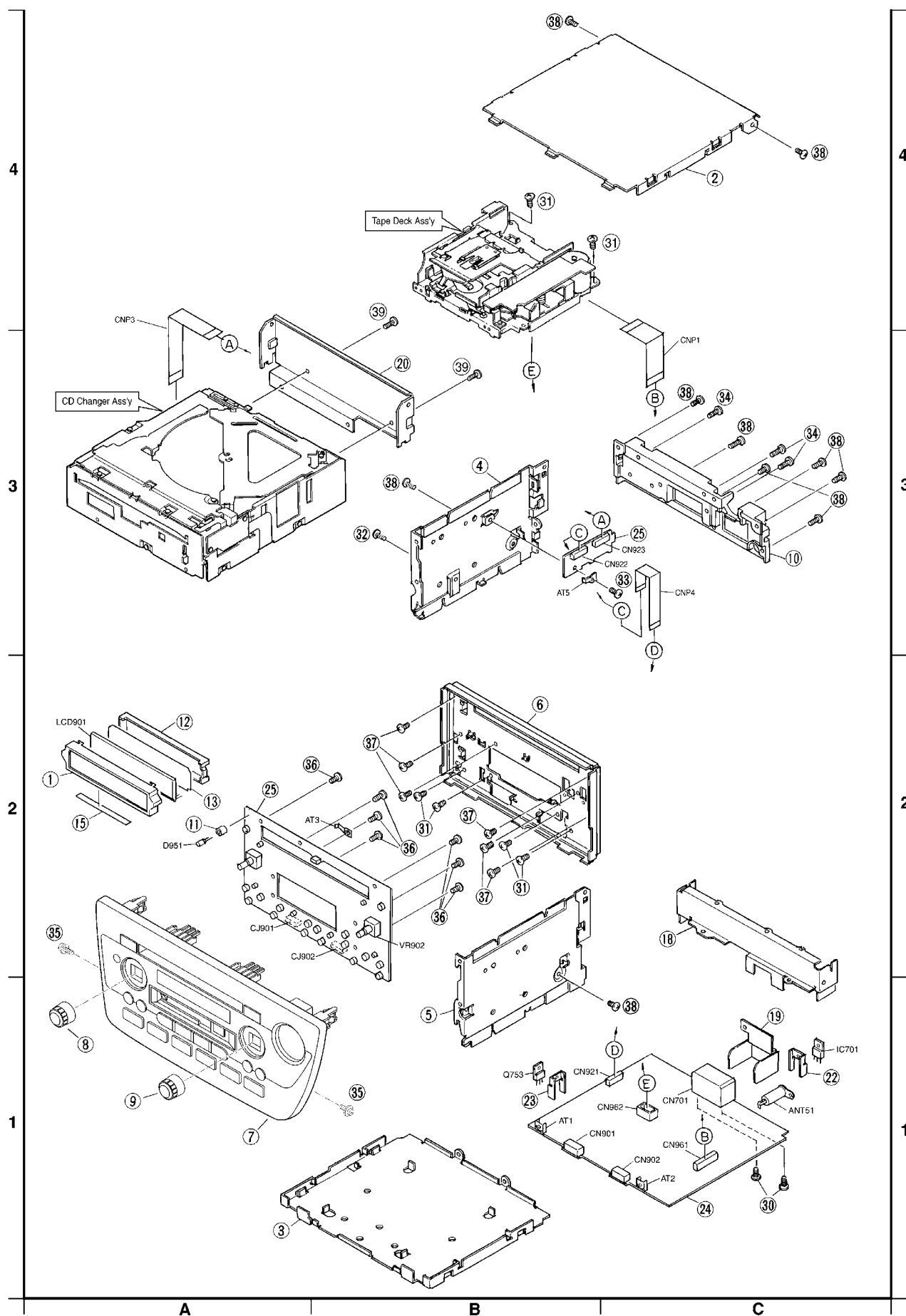
Ref. No.	Part No.	Part Name & Description	Remarks
XL602	YEXLMC60327	Crystal	
XL603	YEXL49U072TA	Crystal	
LAMPS			
Z51	YEAL02007	ZNR	
Z700	YECCL55S222T	ZNR	
NETWORK RESISTORS			
RA601	EXBV8V102JV	Network Resistor	
RA602	EXBV8V102JV	Network Resistor	
RA603	EXBV8V102JV	Network Resistor	
RA604	EXBV8V102JV	Network Resistor	
RA605	EXBV8V102JV	Network Resistor	
RA606	EXBV8V102JV	Network Resistor	
RA607	EXBV8V102JV	Network Resistor	
RA608	EXBV8V102JV	Network Resistor	
RA609	EXBV8V102JV	Network Resistor	
RA610	EXBV8V102JV	Network Resistor	
RA611	EXBV8V102JV	Network Resistor	
RA612	EXBV8V102JV	Network Resistor	
RA613	EXBV8V102JV	Network Resistor	
RA614	EXBV8V102JV	Network Resistor	
RA615	EXBV8V102JV	Network Resistor	
RA616	EXBV8V102JV	Network Resistor	
RA617	EXBV8V102JV	Network Resistor	
RA618	EXBV8V102JV	Network Resistor	
RA925	EXBV8V102JV	Network Resistor	
THERMISTOR			
R730	YERTX030T	Thermistor	
[E8861A] Diaplay Block			
IC's and TRANSISTORS			
IC901	YEAMLC75853	IC	
Q901	YEANA114EKT	Transistor	
Q902	B1GDJEGJ0002	Transistor	
Q903	B1GDJEGJ0002	Transistor	
Q904	YEANA114EKT	Transistor	
Q905	YEANA114EKT	Transistor	
Q906	B1GBCFJN0005	Transistor	
Q907	B1GBCFJN0005	Transistor	
DIODES			
D951	YEADBR3668S	Diode	
D952	B3AGA0000064	Diode	
CAPACITORS			
C900	YECUS1C104KX	Ceramic, 0.1 μ F 16WV	
C901	YECUS1H473KX	Ceramic, 0.047 μ F 50WV	
C902	YECUS1H473KX	Ceramic, 0.047 μ F 50WV	
C903	YECUS1H821JM	Ceramic, 820PF 50WV	
C955	YECUS1H103KX	Ceramic, 0.01 μ F 50WV	
RESISTORS			
R941	ERJ8GEYJ100V	Chip, 10 Ω 1/8W	
R942	ERJ8GEYJ100V	Chip, 10 Ω 1/8W	
R943	ERJ8GEYJ120V	Chip, 12 Ω 1/8W	
R944	ERJ8GEYJ150V	Chip, 15 Ω 1/8W	
R945	ERJ8GEYJ150V	Chip, 15 Ω 1/8W	
R946	ERJ8GEYJ120V	Chip, 12 Ω 1/8W	
R947	ERJ8GEYJ6R8V	Chip, 6.8 Ω 1/8W	
R948	ERJ8GEYJ6R8V	Chip, 6.8 Ω 1/8W	
R949	ERJ8GEYJ121V	Chip, 120 Ω 1/8W	
R951	ERJ8GEYJ271V	Chip, 270 Ω 1/8W	
R952	ERJ8GEYJ121V	Chip, 120 Ω 1/8W	

HONDA / CQ-EH9160A

Ref. No.	Part No.	Part Name & Description	Remarks
R953	ERJ6GEYJ472	Chip, 4.7k Ω 1/10W	
R954	ERJ6GEYJ472	Chip, 4.7k Ω 1/10W	
R955	ERJ6GEYJ220	Chip, 22 Ω 1/10W	
R956	ERJ6GEYJ472	Chip, 4.7k Ω 1/10W	
R957	ERJ6GEYJ683	Chip, 68k Ω 1/10W	
R958	ERJ6GEYJ472	Chip, 4.7k Ω 1/10W	
R959	ERJ6GEYJ472	Chip, 4.7k Ω 1/10W	
R960	ERJ8GEYJ561V	Chip, 560 Ω 1/8W	
R961	ERJ8GEYJ561V	Chip, 560 Ω 1/8W	
R962	ERJ6GEYJ473	Chip, 47k Ω 1/10W	
R963	ERJ6GEYJ102	Chip, 1k Ω 1/10W	
CONNECTORS			
CJ901	K1MQ10A00009	Connector, 10P	
CJ902	K1MQ10A00009	Connector, 10P	
CN922	YEAE5280714	Connector, 14P	
CN923	K1MN15B00014	Connector, 15P	
SWITCHES			
SW901	EVQPVF05K	Switch	
SW902	EVQPVF05K	Switch	
SW903	EVQPVF05K	Switch	
SW904	EVQPVF05K	Switch	
SW905	EVQPVF05K	Switch	
SW906	EVQPVF05K	Switch	
SW907	EVQPVF05K	Switch	
SW909	EVQPVF05K	Switch	
SW910	EVQPVF05K	Switch	
SW911	EVQPVF05K	Switch	
SW912	EVQPVF05K	Switch	
SW913	EVQPVF05K	Switch	
SW914	EVQPVF05K	Switch	
SW915	EVQPVF05K	Switch	
SW916	EVQPVF05K	Switch	
SW917	EVQPVF05K	Switch	
SW918	EVQPVF05K	Switch	
LCD			
LCD901	L5AAALC00020	LCD	
COILS			
L923	YELTBMHS800T	Coil	
LAMPS			
PL901	YEALHSIR043	Pilot Lamp	
PL902	YEALHSIR043	Pilot Lamp	
PL903	YEALHSIR043	Pilot Lamp	
PL904	YEALHSIR043	Pilot Lamp	
PL905	YEALHSIR043	Pilot Lamp	
PL906	YEALHSIR043	Pilot Lamp	
PL907	YEALHSIR043	Pilot Lamp	
PL908	YEALHSIR043	Pilot Lamp	
VARIABLE RESISTORS			
VR901	K9AA015B0013	Variablr resistor	
VR902	K9AA015B0013	Variablr resistor	
Mechanical Parts			
MISCELLANEOUS			
ANT51	YEAA10064	Antenna Receplacle	
AT1	YEFX0213797	Bracket	
AT2	YEFX0213797	Bracket	
AT3	YEFX0213919	Terminal	
AT5	YEAT03346A	Terminal	
CNP1	YEAES17A050A	Connector, 17P	

Ref. No.	Part No.	Part Name & Description	Remarks
CNP3	K9ZZ00000231	Connector, 15P	
CNP4	K9ZZ00000757	Connector, 14P	
1	YEFA131587	Case, LCD	
2	YEFA031717A	Upper Cover	
3	YEFA05781	Bottom Cover	
4	YEFA09720	Side Plate (L)	
5	YEFA09721	Side Plate (R)	
6	YEFA07521A	Front Cover	
7	YEF027254B	Escucheon Ass'y	
8	YEF0136695	Knob, VOL.	
9	YEF0136695	Knob	
10	YGF011017	Heat Sink	
11	YEFK06512	Holder, LED	
12	YEFK06985	Holder, LCD	
13	YEFV021795	Optical Shade	
15	YEFV012057	Insulator	
18	YEFX0214941	Bracket	
19	YEFX0214942	Bracket	
20	YEFX0214940A	Bracket, Deck	
22	YEFX0214202	Bracket, IC701	
23	YEFX0212830	Bracket, Q753	
24	YEP0PT6857A0	PCB w/Component	RTL
25	YEP0PT8861B0	PCB w/Component	RTL
30	YEJT01089	Tapping Screw,	
31	YEJT03131	Tapping Screw,	
32	YEJT03009	Screw	
33	YEJT03015	Tapping Screw,	
34	YEJT03038	Screw	
35	YEJT03207	Tapping Screw,	
36	XTB2+6GFX	Tapping Screw, M2x6mm	
37	YEJS06219A	Screw	
38	XTB3+6FFX	Tapping Screw, M3x6mm	
39	XTB3+5FFX	Screw, M3x5mm	

14 EXPLODED VIEW (Unit)



15 CD CHANGER PARTS LIST

15.1. IC's and Transistors

SERVO BLOCK [E8586C]

Ref. No.	Part No.	Part Name & Description	Remarks
IC101	YEAMBA6354BF	IC	
IC201	MN662783RPW	IC	
IC202	C3ABMB000010	IC	
IC301	MN1873260AB4	IC	
IC401	YEAMBA6792FY	IC	
IC501	YEAMPC358G2T	IC	
IC601	YEAMBA5971FP	IC	
IC602	C0JBAS0051	IC	
IC603	YEAMT4W53FUL	IC	
Q101	2SB766ATX	Transistor	

[E2685A]

Ref. No.	Part No.	Part Name & Description	Remarks
Q1	PN147	IC	
Q2	PN147	IC	
Q3	PN147	IC	

15.2. Diodes

SERVO BLOCK [E8586C]

Ref. No.	Part No.	Part Name & Description	Remarks
D301	MA151WKTX	Diode	

[E2682]

Ref. No.	Part No.	Part Name & Description	Remarks
D1	0N1004	LED	

[E2684]

Ref. No.	Part No.	Part Name & Description	Remarks
D1	LN01201C	LED	
D2	LN01201C	LED	
D3	LN01201C	LED	

[E2685A]

Ref. No.	Part No.	Part Name & Description	Remarks
D1	0N1004	LED	

15.3. Capacitors

SERVO BLOCK [E8586C]

Ref. No.	Part No.	Part Name & Description	Remarks
C100	ECEV1CA470SP	Electrolytic, 47µF 16WV	
C101	YECUS1C104KX	Ceramic, 0.1µF 16WV	
C102	YECUS1C104KX	Ceramic, 0.1µF 16WV	
C103	F3H0J1070005	Tantalum, 100µF 6.3WV	
C104	YECUS1C104KX	Ceramic, 0.1µF 16WV	
C105	F3E0J475A001	Ceramic, 4.7µF 6.3WV	
C106	YECUS1E273KX	Ceramic, 0.027µF 25WV	
C107	YECUS1H152KX	Ceramic, 0.0015µF 50WV	
C108	YECUS1H472KX	Ceramic, 0.0047µF 50WV	
C109	YECUS1H102KX	Ceramic, 0.001µF 50WV	
C110	YECUS1H102KX	Ceramic, 0.001µF 50WV	
C111	YECUSW1C106MS	Tantalum, 10µF 16WV	
C112	YECUS1C104KX	Ceramic, 0.1µF 16WV	
C113	YECUS1C104KX	Ceramic, 0.1µF 16WV	
C114	YECUSW1C106MS	Tantalum, 10µF 16WV	
C115	YECUS1H102KX	Ceramic, 0.001µF 50WV	
C116	YECUS1H102KX	Ceramic, 0.001µF 50WV	
C118	YECUS1H391JM	Ceramic, 390PF 50WV	
C120	YECUS1H561JM	Ceramic, 560PF 50WV	
C122	YECUS1C104KX	Ceramic, 0.1µF 16WV	

Ref. No.	Part No.	Part Name & Description	Remarks
C202	YECUS1H123KX	Ceramic, 0.012µF 50WV	
C203	YECUS1C334KX	Ceramic, 0.33µF 16WV	
C204	YECUS1C104KX	Ceramic, 0.1µF 16WV	
C205	YECUSW1C106MS	Tantalum, 10µF 16WV	
C206	ECEV0JA470SR	Electrolytic, 47µF 6.3WV	
C207	YECUS1C104KX	Ceramic, 0.1µF 16WV	
C208	YECUS1C104KX	Ceramic, 0.1µF 16WV	
C209	YECUSW1C106MS	Tantalum, 10µF 16WV	
C210	YECUS1C104KX	Ceramic, 0.1µF 16WV	
C211	YECUS1A105KX	Ceramic, 1µF 10WV	
C301	YECUS1C104KX	Ceramic, 0.1µF 16WV	
C302	YECUSW1C106MS	Tantalum, 10µF 16WV	
C305	YECUS1H103KX	Ceramic, 0.01µF 50WV	
C401	YECUS1C104KX	Ceramic, 0.1µF 16WV	
C402	ECEV1CA470SP	Electrolytic, 47µF 16WV	
C403	YECUS1C104KX	Ceramic, 0.1µF 16WV	
C501	YECUS1C104KX	Ceramic, 0.1µF 16WV	
C503	YECUS1E273KX	Ceramic, 0.027µF 25WV	
C504	YECUS1E393KX	Ceramic, 0.039µF 25WV	
C601	YECUS1C104KX	Ceramic, 0.1µF 16WV	
C602	ECEV1CA470SP	Electrolytic, 47µF 16WV	
C603	YECUS1C104KX	Ceramic, 0.1µF 16WV	
C604	YECUS1C104KX	Ceramic, 0.1µF 16WV	
C605	YECUZ1H821KX	Ceramic, 820pF 50WV	

15.4. Resistors

SERVO BLOCK [E8586C]

Ref. No.	Part No.	Part Name & Description	Remarks
R100	ERJ6GEYJ334	Chip, 330kΩ 1/10W	
R101	ERJ6GEYJ101	Chip, 100Ω 1/10W	
R102	ERJ12YJ330H	Chip, 33Ω 1/2W	
R103	ERJ6GEYJ683	Chip, 68kΩ 1/10W	
R104	ERJ6GEYJ683	Chip, 68kΩ 1/10W	
R105	ERJ6GEYJ333	Chip, 33kΩ 1/10W	
R106	ERJ6GEYJ184	Chip, 180kΩ 1/10W	
R107	ERJ6GEYJ184	Chip, 180kΩ 1/10W	
R108	ERJ6GEYJ823	Chip, 82kΩ 1/10W	
R109	ERJ6GEYJ334	Chip, 330kΩ 1/10W	
R110	ERJ6GEYJ102	Chip, 1kΩ 1/10W	
R111	ERJ6GEYJ102	Chip, 1kΩ 1/10W	
R112	ERJ6GEYJ393	Chip, 39kΩ 1/10W	
R113	ERJ6GEYJ333	Chip, 33kΩ 1/10W	
R201	ERJ6GEYJ124	Chip, 120kΩ 1/10W	
R202	ERJ6GEYJ473	Chip, 47kΩ 1/10W	
R203	ERJ6GEYJ334	Chip, 330kΩ 1/10W	
R204	ERJ6GEYJ473	Chip, 47kΩ 1/10W	
R205	ERJ6GEYJ331	Chip, 330Ω 1/10W	
R206	ERJ6GEYJ470	Chip, 47Ω 1/10W	
R207	ERJ6GEYJ472	Chip, 4.7kΩ 1/10W	
R208	ERJ6GEYJ472	Chip, 4.7kΩ 1/10W	
R209	ERJ6GEYJ472	Chip, 4.7kΩ 1/10W	
R210	ERJ6GEYJ472	Chip, 4.7kΩ 1/10W	
R211	ERJ6GEYJ472	Chip, 4.7kΩ 1/10W	
R212	ERJ6GEYJ472	Chip, 4.7kΩ 1/10W	
R213	ERJ6GEYJ472	Chip, 4.7kΩ 1/10W	
R301	ERJ6GEYJ472	Chip, 4.7kΩ 1/10W	
R302	ERJ6GEYJ472	Chip, 4.7kΩ 1/10W	
R303	ERJ6GEYJ472	Chip, 4.7kΩ 1/10W	
R304	ERJ6GEYJ472	Chip, 4.7kΩ 1/10W	
R305	ERJ6GEYJ563	Chip, 56kΩ 1/10W	
R306	ERJ6GEYJ563	Chip, 56kΩ 1/10W	
R307	ERJ6GEYJ473	Chip, 47kΩ 1/10W	
R308	ERJ6GEYJ472	Chip, 4.7kΩ 1/10W	
R309	ERJ6GEYJ472	Chip, 4.7kΩ 1/10W	
R310	ERJ6GEYJ472	Chip, 4.7kΩ 1/10W	
R311	ERJ6GEYJ472	Chip, 4.7kΩ 1/10W	
R312	ERJ6GEYJ473	Chip, 47kΩ 1/10W	
R313	ERJ6GEYJ473	Chip, 47kΩ 1/10W	
R314	ERJ6GEYJ473	Chip, 47kΩ 1/10W	
R315	ERJ6GEYJ473	Chip, 47kΩ 1/10W	
R316	ERJ6GEYJ473	Chip, 47kΩ 1/10W	

Ref. No.	Part No.	Part Name & Description	Remarks
R317	ERJ6GEYJ471	Chip, 470Ω 1/10W	
R318	ERJ6GEYJ471	Chip, 470Ω 1/10W	
R319	ERJ6GEYJ471	Chip, 470Ω 1/10W	
R320	ERJ6GEYJ471	Chip, 470Ω 1/10W	
R321	ERJ6GEYJ471	Chip, 470Ω 1/10W	
R322	ERJ6GEYJ473	Chip, 47kΩ 1/10W	
R324	ERJ6GEYJ473	Chip, 47kΩ 1/10W	
R325	ERJ6GEYJ473	Chip, 47kΩ 1/10W	
R326	ERJ6GEYJ473	Chip, 47kΩ 1/10W	
R327	ERJ6GEYJ473	Chip, 47kΩ 1/10W	
R328	ERJ6GEYJ473	Chip, 47kΩ 1/10W	
R401	ERJ6GEYJ222	Chip, 2.2kΩ 1/10W	
R402	ERJ6GEYJ222	Chip, 2.2kΩ 1/10W	
R501	ERJ6GEYJ101	Chip, 100Ω 1/10W	
R502	ERJ6GEYJ103	Chip, 10kΩ 1/10W	
R503	ERJ6GEYJ103	Chip, 10kΩ 1/10W	
R504	ERJ6GEYJ222	Chip, 2.2kΩ 1/10W	
R505	ERJ6GEYJ103	Chip, 10kΩ 1/10W	
R601	ERJ6GEYJ123	Chip, 12kΩ 1/10W	
R602	ERJ6GEYJ103	Chip, 10kΩ 1/10W	
R603	ERJ6GEYJ273	Chip, 27kΩ 1/10W	
R604	ERJ6GEYJ103	Chip, 10kΩ 1/10W	
R605	ERJ6GEYJ183	Chip, 18kΩ 1/10W	
R606	ERJ6GEYJ393	Chip, 39kΩ 1/10W	
R607	ERJ6GEYJ103	Chip, 10kΩ 1/10W	
R608	ERJ6GEYJ472	Chip, 4.7kΩ 1/10W	
R609	ERJ6GEYJ472	Chip, 4.7kΩ 1/10W	

15.5. Connectors

SERVO BLOCK [E8586C]

Ref. No.	Part No.	Part Name & Description	Remarks
CN1	YEA5220715	Connector, 15P	
CN101	YEA5220715	Connector, 15P	
CN301	YEA5227112	Connector, 12P	
CN401	YEA5220706	Connector, 6P	
CN402	YEA5326102	Connector, 2P	
CN501	YEA5227110	Connector, 10P	

[E2684]

Ref. No.	Part No.	Part Name & Description	Remarks
JD1	YEA5227106	Connector, 6P	

15.6. Electric Parts

SWITCHES

Ref. No.	Part No.	Part Name & Description	Remarks
SW1	ESE102MH4	Switch	
SW1	ESE102MH4	Switch	
SW10	ESE102MH4	Switch	
SW11	ESE102MH4	Switch	
SW12	ESE102MH4	Switch	
SW13	ESE102MH4	Switch	

CRYSTAL

Ref. No.	Part No.	Part Name & Description	Remarks
XL301	YEXLSTCC737T	Crystal OSC	

CERAMIC FILTERS

Ref. No.	Part No.	Part Name & Description	Remarks
XL201	H2D169500001	Ceramic Filter	

COIL

Ref. No.	Part No.	Part Name & Description	Remarks
L101	YELTLM41P750	Coil	

15.7. Mechanical parts

MISCELLANEOUS

Ref. No.	Part No.	Part Name & Description	Remarks
FX37	YEA012348A	Cord w/Connector	(4-A)
4	YEAP2683	Suspension FPC	(1-E)
5	YEATSD00405	Terminal	(1-F)
6	YEFA011711G	Upper Chassis Ass'y	(3-B)
7	YEFA011713A	Side Chassis (R)	(1-C)
8	YEFA011714D	Side Chassis (L) Ass'y	(4-A)
9	YEFA011716	Suspension Chassis Ass'y	(1-D)
10	YEFA011718A	Suspension Chassis (Bottom) Ass'y	(1-D)
11	YEFA011720B	Swing Chassis Ass'y	(3-D)
12	YEFA011722A	Stocker Plate Ass'y	(4-F)
13	YEFA011724B	Main Chassis Ass'y	(3-D)
14	YEF04707	Damper	(4-D)
16	YEFV011897	Insulator	(2-F)
17	YEFW04158	Bearing	(3-D)
18	YEFW04159A	Roller Shaft Holder(L)	(2-B)
19	YEFW04161A	Feed Screw Housing	(1-E)
20	YEFW04167	Disc Collar	(2-B)
21	YEFW05389	Stocker Cam Ring	(4-E) (3-F)
22	YEFW062351	Disc Roller Shaft	(2-A)
23	YEFW062461B	Roller Shaft Ass'y	(2-B)
24	YEFX003872	Elevator Gear (1)	(3-F)
25	YEFX003873	Elevator Gear (2)	(2-F) (3-F)
26	YEFX003874	Elevator Gear (3)	(3-E)
27	YEFX003875	Elevator Gear (4)	(3-E) (2-F)
28	YEFX003877	Traverse Gear (2)	(2-D)
29	YEFX003878A	Traverse Gear (3)	(2-D)
30	YEFX003879	Traverse Gear (4)	(1-D)
31	YEFX003882A	Stocker Cam Gear (1)	(3-F)
32	YEFX003883B	Stocker Cam Gear (2)	(3-E) (2-F)
33	YEFX003884	Stocker Cam Gear (3)	(3-E) (2-F)
34	YEFX003885	Disc Hold Gear	(3-F)
35	YEFX0031057	Load Gear	(3-B)
36	YEFX003891A	Push Gear (1)	(3-B)
37	YEFX0031003	Push Gear (2)	(3-B)
38	YEFX003894	Horizontal Cam Gear (1)	(3-D)
39	YEFX003895A	Horizontal Cam Gear (2)	(2-E)
40	YEFX003896	Horizontal Gear (1)	(3-E)
41	YEFX003897A	Horizontal Gear (2)	(3-E)
42	YEFX003898	Horizontal Gear (3)	(3-E)
43	YEFX003899B	Horizontal Gear (4)	(3-D)
44	YEFX003929	Horizontal Cam Gear (3)	(3-E)
45	YEFX003931	Horizontal Gear (5)	(3-D) (2-D)
46	YEFX003932A	Push Cam Gear	(3-B)
47	YEFX0052269	FPC Hold Spring	(2-D)
48	YEFX0052272	Guide Spring (B)	(1-B)
49	YEFX0052274B	Suspension Lock Spring	(3-D)
50	YEFX0052275A	Swing Spring	(3-D)
51	YEFX0052276A	Stocker Spring (1)	(4-D) (4-E)
52	YEFX0052277	Stocker Spring (2)	(4-D) (4-E)
53	YEFX0052278	Thrust Spring	(1-E)
54	YEFX0052279	Sencer Lever Spring	(1-E) (1-F)
55	YEFX0052494	Damper Spring	(4-D)
56	YEFX0052447	Balance Spring (1)	(3-D)
57	YEFX0052284	Push Spring	(3-A)
58	YEFX0052285A	Spring	(4-B)
59	YEFX0052287A	Roller Hold Spring (L)	(2-B)
60	YEFX0052288A	Roller Hold Spring (R)	(2-B)
61	YEFX0052289A	Push Lever Spring	(4-E)
62	YEFX0052290A	Feeder Spring	(4-B)
63	YEFX0052291B	Push Plate Spring	(3-B)
64	YEFX0052292A	Change Spring	(1-D)
65	YEFX0052335	Guide Spring (F)	(2-B)

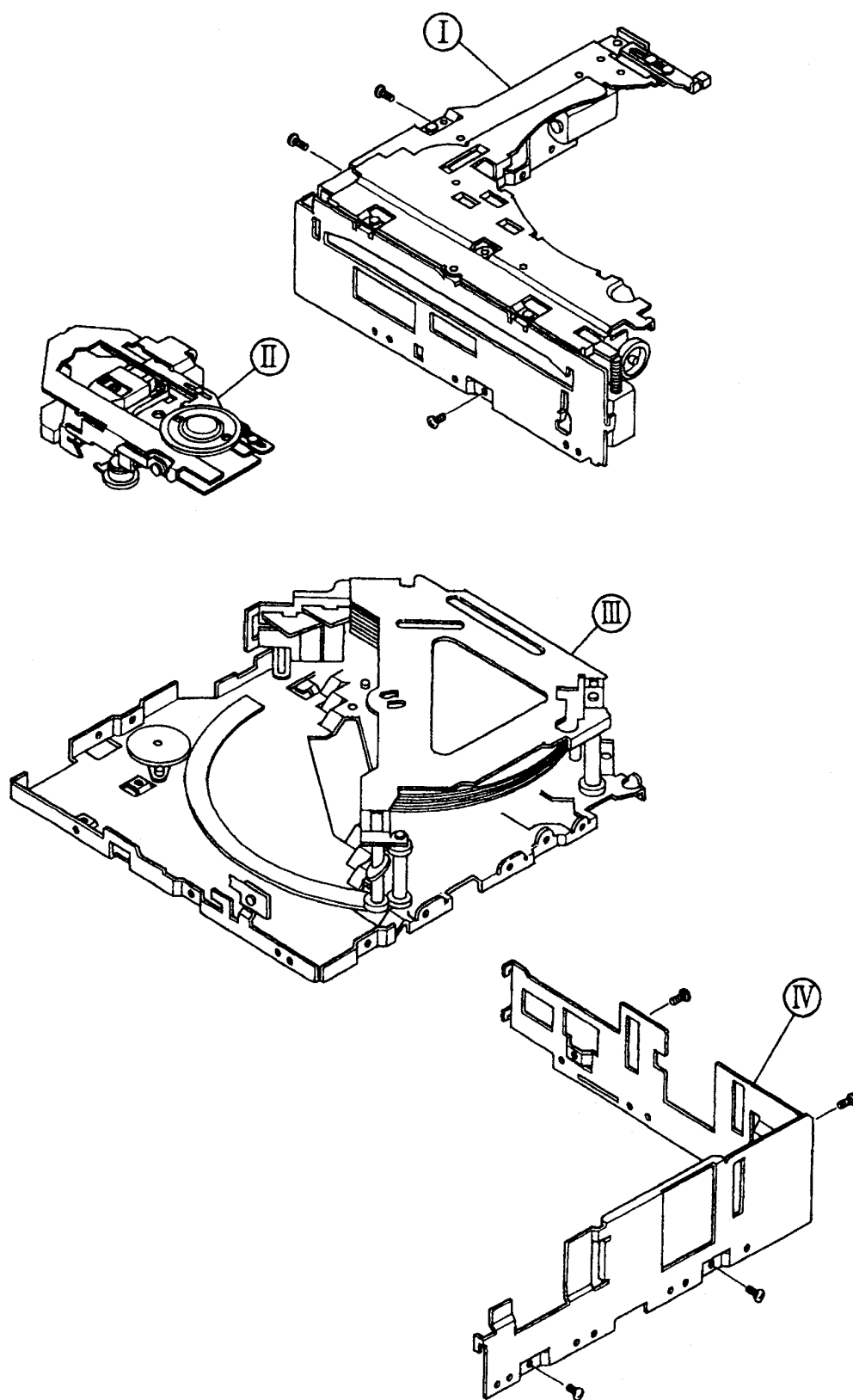
HONDA / CQ-EH9160A

Ref. No.	Part No.	Part Name & Description	Remarks
66	YEFX0052366	Stocker Thrust Spring	(4-E) (3-F)
67	YEFX0052495	Damper Spring (R)	(4-D)
68	YEFX0052449A	Damper Spring (L)	(4-D)
69	YEFX0052445	Lock Spring	(3-A)
70	YEFX018552	Traverse Motor Bracket Ass'y	(2-E)
71	YEFX018553D	Guide(F) Bracket	(3-E)
72	YEFX018595	Guide(B)	(3-D)
73	YEFX018556A	Bearing Bracket	(3-D)
74	YEFX018596	Stopper Plate	(1-D)
75	YEFX018638	Gear Bracket Ass'y	(2-D)
76	YEFX018600	Elevator Motor Bracket	(3-F)
77	YEFX0461903A	Guide Lever (B) Ass'y	(3-D)
78	YEFX0461905A	Guide Lever (F) Ass'y	(3-E)
79	YEFX0461914B	Senser Cover	(1-F)
80	YEFX0461917	Stocker Rack	(4-F)
81	YEFX0461918	Senser Lever(B)	(2-E)
82	YEFX0461919A	Sneser Lever(FA)	(1-F)
83	YEFX0461922D	Feeder Plate	(2-B)
84	YEFX0461924C	Push Lever	(3-A)
85	YEFX0461926A	Rack Lever	(3-F)
86	YEFX0461931A	Push Lever	(4-E)
87	YEFX0462062B	Escape Lever(1)	(3-A)
88	YEFX219129	Guide (F)	(2-B)
90	YEFX0462002C	Guide Cam Plate(F)	(1-B)
91	YEFX0462003B	Guide Cam (B) Plate Ass'y	(1-B)
92	YEFX0462026	Lever Guide Plate Ass'y	(2-D)
93	YEFX02342	Felt	(4-A)
94	YEFX0462029	Feeder Guide Plate Ass'y	(2-B)
95	YEFX206135C	Guide(BL)	(1-B)
96	YEFX206136D	Guide(BU)	(1-B)
97	YEFX206137A	Guide(FL)	(2-B)
98	YEFX206138C	Guide(FU)	(2-B)
99	YEFX206139E	Disc Guide	(2-A)
100	YEFX206140	Traverse Guide	(1-D)
101	YEFX206141A	FPC Guide	(1-D)
102	YEFX206143	Disc Guide(S)	(2-D)
103	YEFX206144	Disc Guide(U)	(3-B)
104	YEFX218296	Disc Roller	(2-A)
105	YEFX218299	Disc Roller	(2-B)
106	YEFX219124A	Guide (B) Base Ass'y	(1-B)
107	YEFX219126D	Guide Base (F) Ass'y	(2-B)
108	YEFX233504A	Stocker Tray Housing	(4-D)
109	YEFX233505A	Disc Holder(L)	(3-F)
110	YEFX233506	Disc Holder(U)	(4-E)
111	YEFX234192	Elevator Cam	(2-E)
112	YEFX249486	Feeder Arm Ass'y	(1-A)
113	YEFX9992184	Suspension Balancer (1)	(1-D)
114	YEFX9992237	Stocker Tray	(4-D)
115	YEFX9991903	Feed Screw Guide	(1-E)
120	YEJT03220	Feed Screw Ass'y	(1-D)
121	YEP0FX3384	Optical Pick-up Ass'y	(1-E)
122	YEP0FX3633	Spindle Motor Ass'y	(1-E)
123	YEP0FX3661S	Horizontal Motor Ass'y	(4-A)
124	YEP0FX3660S	Vertical Motor Ass'y	(3-F)
125	YEP0FX3662S	Loading Motor Ass'y	(3-C)
126	YEP0FX3663S	Traverse Motor Ass'y	(2-E)
131	YEFX9992192A	Suspension Balancer	(1-D)
132	YEFX9992193	Suspension Balancer (3)	(1-D)
133	YEFX0052448	Balance Spring (B)	(3-D)
134	YEFX218308	Roller	(1-A)
135	YEFX0031053	Load Gear (2)	(2-B)
136	YEFX0031054	Load Gear (3)	(2-C)
137	YEFX014040	Retaining Ring, 2mm	(2-C)
138	YEP0PT8586A2	PCB w/Component	RTL
139	YEP0PT2682A0	PCB w/Component	RTL
140	YEP0PT2684A0	PCB w/Component	RTL
141	YEP0PT2685A0	PCB w/Component	RTL

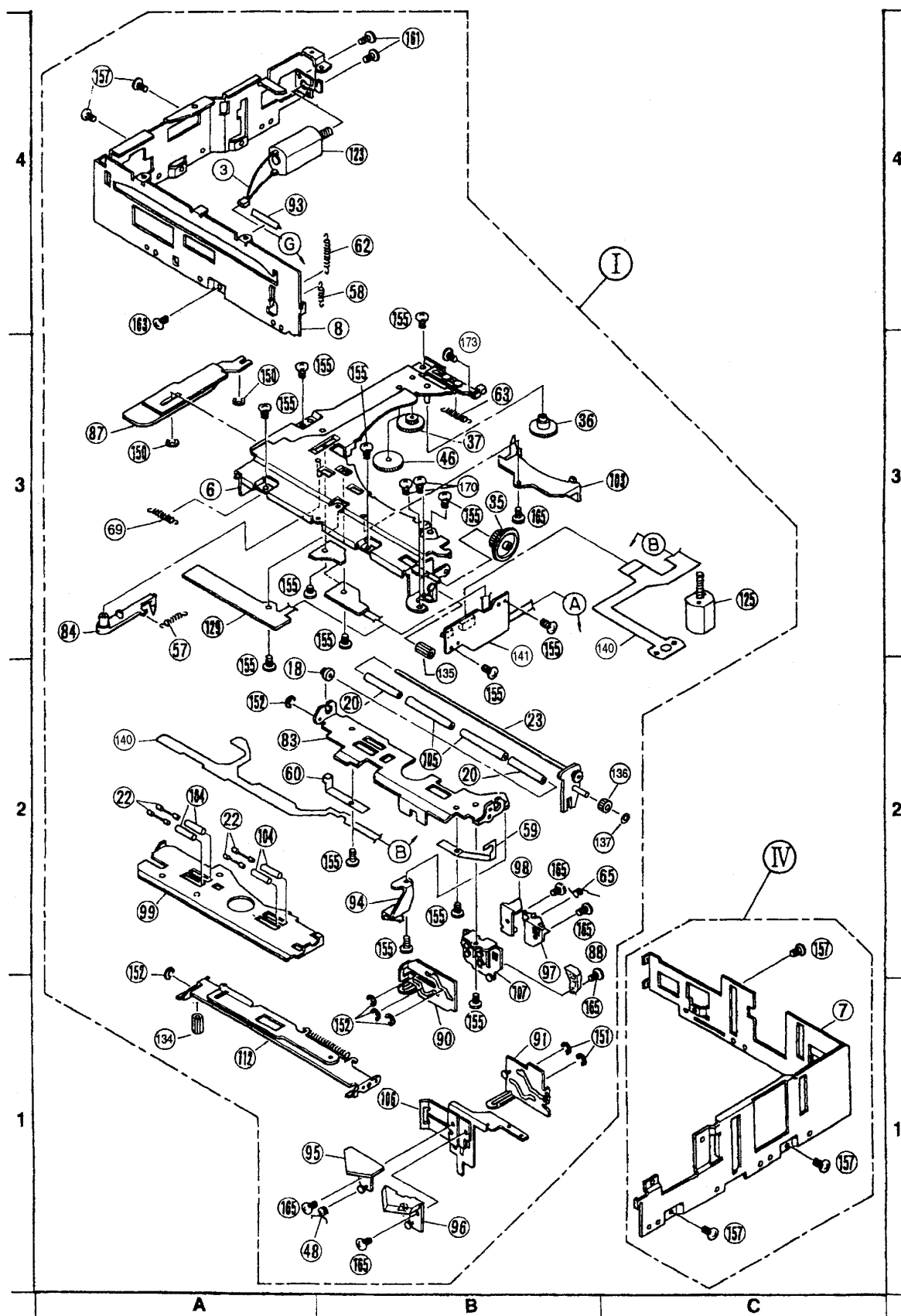
Ref. No.	Part No.	Part Name & Description	Remarks
152	XUC15V	Retaining Ring, 1.5mm	
153	YEFX014047	Retaining Ring	
154	YEJS06097A	Screw, 2mm * 2.5mm	
155	YEJS06173	Screw	
156	YEJS06220	Screw	
157	YEJT03216	Tapping Screw	
158	XQN14+C18FX	Screw	
159	XQN17+A2FX	Screw	
160	XQN2+A2FX	Screw	
161	XQN2+C25FX	Screw	
162	XSB2+3FX	Screw, 2mm * 3mm	
163	XSB26+3FX	Screw, 2.6mm * 3mm	
164	XYN2+C3FX	Screw, 2mm * 3mm	
165	XYN2+C4FX	Screw, 2mm * 4mm	
166	XSB2+4FX	Screw, 2mm * 4mm	
167	XYN2+J5FX	Screw, 2mm * 5mm	
168	XYN2+C8FX	Screw, 2mm * 8mm	
169	XYN2+C10FX	Screw, 2mm * 10mm	
170	XQN2+C2FX	Screw, 2mm * 2mm	
171	YEJT03129	Tapping Screw, 2mm * 4mm	
172	YEJT03173	Tapping Screw,	

Ref. No.	Part No.	Part Name & Description	Remarks
150	XUC2V	Retaining Ring, 2mm	
151	YEJE01041	Retaining Ring	

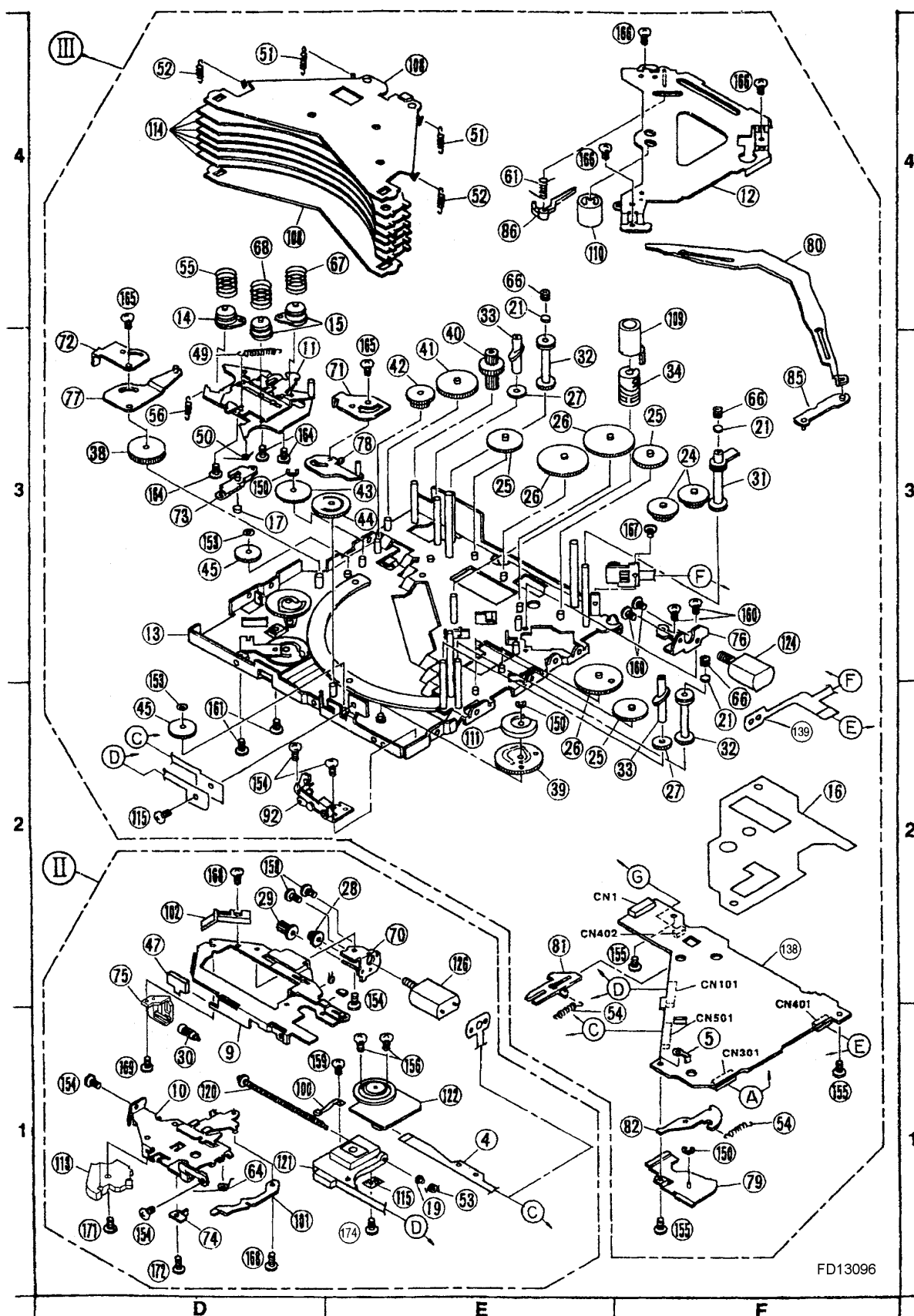
16 EXPLODED VIEW (CD Deck-1)



17 EXPLODED VIEW (CD Deck-2)



18 EXPLODED VIEW (CD Deck-3)



19 TAPE PLAYER PARTS

19.1. IC's and Transistors

DOLBY BLOCK [E8790A]

Ref. No.	Part No.	Part Name & Description	Remarks
IC1	YEAMCXA2565Q	IC	
Q401	YEANCL14YKT	Transistor	

19.2. Diodes

REEL BLOCK [E8791]

Ref. No.	Part No.	Part Name & Description	Remarks
TE1,2	YEADRP1221	Diode	

19.3. Capacitors

DOLBY BLOCK [E8790A]

Ref. No.	Part No.	Part Name & Description	Remarks
C201, 202	YECUS1H331JM	Ceramic, 330PF 50WV	
C204	YECUS1H123KX	Ceramic, 0.012μF 50WV	
C205	YECUS1E333KX	Ceramic, 0.033μF 25WV	
C206	YECUS1C104KX	Ceramic, 0.1μF 16WV	
C301, 302	YECUS1H331JM	Ceramic, 330PF 50WV	
C304	YECUS1H123KX	Ceramic, 0.012μF 50WV	
C305	YECUS1E333KX	Ceramic, 0.033μF 25WV	
C306	YECUS1C104KX	Ceramic, 0.1μF 16WV	
C401	ECA1CSA220I	Electrolytic, 22μF 16WV	
C402	ECEA1AKS330I	Electrolytic, 33μF 10WV	
C403	YECUV2A103KX	Ceramic, 0.01μF 100WV	
C404	YECUS1E333KX	Ceramic, 0.033μF 25WV	
C405	ECA1HSAR33I	Electrolytic, 0.33μF 50WV	
C406	YECUS1H472KX	Ceramic, 0.0047μF 50WV	
C407	ECEA1CKS100I	Electrolytic, 10μF 16WV	
C409	YECUS1H472KX	Ceramic, 0.0047μF 50WV	
C501	YECUV1E334ZF	Ceramic, 0.33μF 25WV	

REEL BLOCK [E8791]

Ref. No.	Part No.	Part Name & Description	Remarks
C1 to 3	YECUS1H471JM	Ceramic, 470PF 50WV	

19.4. Resistors

DOLBY BLOCK [E8790A]

Ref. No.	Part No.	Part Name & Description	Remarks
R201,202	ERJ6GEYJ683	Chip, 68kΩ 1/10W	
R207	ERJ8GEYJ181V	Chip, 180Ω 1/8W	
R301,302	ERJ6GEYJ683	Chip, 68kΩ 1/10W	
R307	ERJ6GEYJ181	Chip, 180Ω 1/10W	
R402	ERJ6GEYJ183	Chip, 18kΩ 1/10W	
R403	ERJ6GEYJ473	Chip, 47kΩ 1/10W	
R404	ERJ8GEYJ334V	Chip, 330kΩ 1/8W	
R405	ERJ8GEYJ392V	Chip, 3.9kΩ 1/8W	
R406	ERJ6GEYJ273	Chip, 27kΩ 1/10W	
R408	ERJ8GEYJ223V	Chip, 22kΩ 1/8W	
R409	ERJ6GEYJ273	Chip, 27kΩ 1/10W	
R501	ERJ6GEYJ472	Chip, 4.7kΩ 1/10W	

REEL BLOCK [E8791]

Ref. No.	Part No.	Part Name & Description	Remarks
R1,2	ERJ8GEYJ683V	Chip, 68kΩ 1/8W	
R3	ERJ6GEYJ472	Chip, 4.7kΩ 1/10W	
R4 to 6	ERJ8GEYJ472V	Chip, 4.7kΩ 1/8W	
R7, 8	ERJ8GEYJ821V	Chip, 820Ω 1/8W	

19.5. Connectors

DOLBY BLOCK [E8790A]

Ref. No.	Part No.	Part Name & Description	Remarks
CN1	YEAE012385	Connector, 17P	
CN3	YEAESLW05R1	Connector, 5P	

REEL BLOCK [E8791]

Ref. No.	Part No.	Part Name & Description	Remarks
CN2	YEAE0110TKCR	Connector, 10P	
JP3	YGAJ071387A	CORD W/Connector	

19.6. Electric Parts

SWITCHES

Ref. No.	Part No.	Part Name & Description	Remarks
SW1	K0J1CB00001	Switch	
SW2	YEAS07174	Switch	
SW3	YEAS08042	Switch	
SW4	YEAS07174	Switch	
SW5	EVQWJE001	Rotary Switch	

VARIABLE RESISTORS

Ref. No.	Part No.	Part Name & Description	Remarks
VR201, 301	EVNDXAA00B13	Variable Resistor	

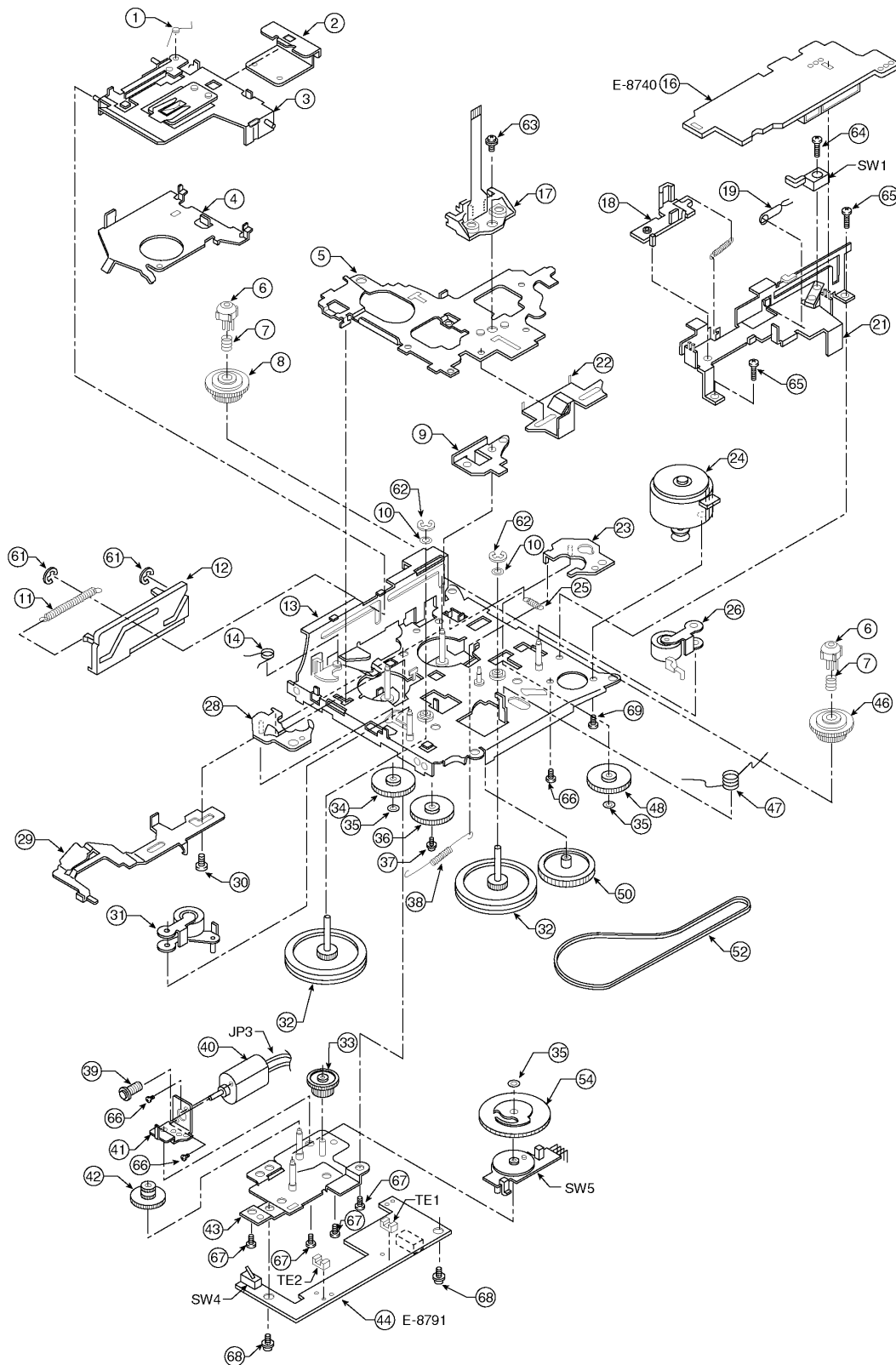
19.7. Mechanical Parts

MISCELLANEOUS

Ref. No.	Part No.	Part Name & Description	Remarks
1	YGFX0052472	Lock Plate Spring	
2	YGFX0052454	Spring	
3	YGFX0462100	Cassette Holder (U) Ass'y	
4	YGFX0462104	Cassette Holder (L)	
5	YGFA011830	Head Chassis Ass'y	
6	YGFX234194	Cam	
7	YGFX0052427	Back Tension Spring	
8	YGFX209271	Reel (R) Ass'y	
9	YGFX0052471	Holding Spring	
10	YGJW04131	Washer	
11	YGFX0052475	Lack Plate Spring	
12	YGFX0031035	Lack Plate	
13	YGFA011827	Main Chassis Ass'y	
14	YGFX0052444	EQ Lever Spring	
16	YGP0PT8790A0	Dolby P.C.B. Ass'y	
17	YGP9FZ2973	Head Ass'y	
18	YGFX0462105	Lever	
19	YGFX0052478	Vibration-proof Spring	
20	YGFX0052477	Spring	
21	YGFX239470	Cassette Guid Plate	
22	YGFX0462097	PRO Change Plate	
23	YGFX0031031	Idler Gear Plate (F) Ass'y	
24	YGP0FX3845	Main Motor Ass'y	
25	YGFX0052474	Lack Return Spring	
26	YGFX218305	Pinch Roller (F) Ass'y	
28	YGFX0031033	Idler Gear Plate (R) Ass'y	
29	YGFX0462102	Lack Return Link	
30	YGFW062600	Lack Return Link Shaft	
31	YGFX218306	Pinch Roller (R) Ass'y	
32	YGFX213213	Flywheel Ass'y	
33	YGFX0031001	Drive Gear (2)	
34	YEFX003753B	Play Idler Gear	
35	YGFX014075	Lock Ling	
36	YGFX003970	Gear	
37	YGJT03250	Gear Shaft	
38	YGFX0052446	Idler Gear Plate Spring	
39	YGFX0031030	Worm Gear	
40	YGP0FX3846	Loading Motor Ass'y	
41	YGFX030102	Worm Gear Stopper	
42	YGFX0031026	Drive Gear (3)	

Ref. No.	Part No.	Part Name & Description	Remarks
43	YGFA011851	Drive Chassis Ass'y	
44	YGPOPT8791A0	Reel P.C.B. Ass'y	
46	YGFX209270	Reel (F) Ass'y	
47	YGFX0052473	Pinch Roller Spring	
50	YGFX003971	PRO Change Gear	
52	YEFR03083	Belt	
54	YGFX0031029	Drive Gear	
61	YEJE01004	E-Ring	
62	YEJE01036	E-Ring	
63	XYN2+J6FX	Screw, 2 x 6mm	
64	XYN2+C8FX	Screw, 2 x 8mm	
65	YEJT03167	Screw,	
66	YEJS06097A	Screw, 2 x 2.5mm	
67	YEJT03271	Screw,	

20 EXPLODED VIEW (Tape Deck)



YGFD04728

A

B

22.1. Tape Block



23.2. Main Block



23.3. CD Servo Block

HONDA / CD-EH0160A

