

T-Line**D/EU****Funline2****Lübeck C30**

7 640 105 510

Luxembourg C30

7 640 110 510

Augsburg C30

7 640 115 510

Dublin C30

7 640 120 510

Boston C30

7 640 125 510

Kiel CD30

7 640 155 310

Lausanne CD30

7 640 160 310

Alicante CD30

7 640 165 310

Minnesota DJ30

7 640 315 510

Ontario DJ30

7 640 320 510

Düsseldorf C50

7 640 205 510

Bologna C50

7 640 210 510

Sylt CD50

7 640 255 310

Modena CD50

7 640 260 310

7 640 260 312

7 640 260 315

7 640 260 318

Colorado DJ50

7 640 405 510

Carolina DJ50

7 640 410 510

Dakota DJ50

7 640 460 310

8 622 402 383 BN 03/00 AG

Serviceanleitung • Service Manual**CLASS 1
LASER PRODUCT****UNSICHTBARE LASERSTRAHLUNG
NICHT DEM STRAHL AUSSETZEN
LASER CLASS 3B****(D) VORSICHT!**

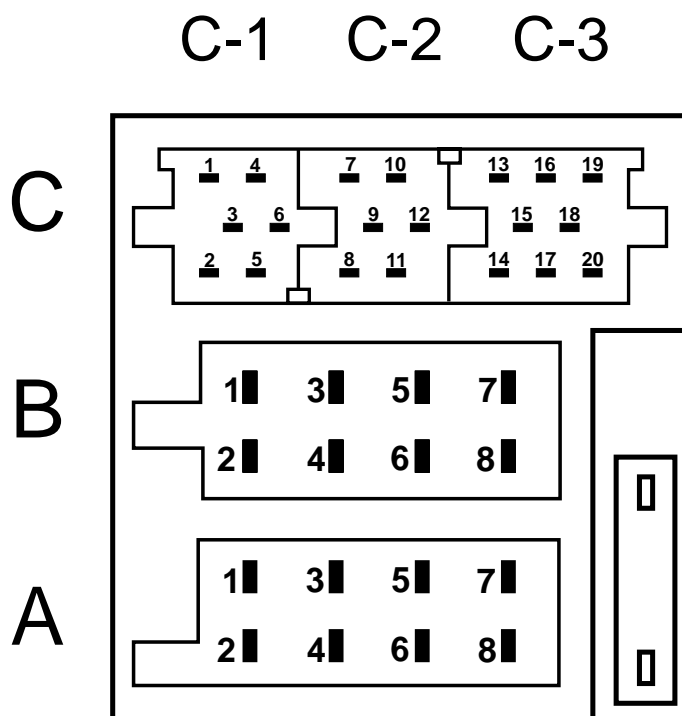
**Die CD-Geräte beinhalten eine Laserkomponente!
Im Servicefall bitte nachfolgende Hinweise
beachten:**

- Das Gerät arbeitet mit einem unsichtbaren Laserstrahl.
- Bei geöffnetem Gerät tritt im Bereich des Plattenfaches Laserstrahlung aus.
- Nicht in den Strahl blicken.
- Unbeteiligte Personen vom Arbeitsplatz fernhalten.
- Der Betrachtungsabstand darf 13 cm nicht unterschreiten.
- Kann dies nicht eingehalten werden, muß eine geeignete Laserschutzbrille getragen werden.

(GB) CAUTION!

**The CD units are equipped with a laser component!
For servicing make sure to observe the following
instructions:**

- The unit operates with invisible laser beams.
- When the cover is removed, invisible laser beams are emitted near the disc compartment.
- Avoid direct eye contact with these beams.
- Keep unauthorised persons away from the workbench.
- The viewing distance should not be less than 13 cm.
- If this distance cannot be kept, use suitable laser safety goggles.



A		B	
1	NC	*1	Lautspr. / Speaker Out (RR) +
*2	Telephone mute	*2	Lautspr. / Speaker Out (RR) -
3	NC	3	Lautspr. / Speaker Out (RF) +
4	Dauerplus / Permanent plus (KL 30)	4	Lautspr. / Speaker Out (RF) -
*5	Automatik-Antenne / Automatic antenna	5	Lautspr. / Speaker Out (LF) +
6	NC	6	Lautspr. / Speaker Out (LF) -
7	Zündungsplus / Ignition plus (KL 15)	*7	Lautspr. / Speaker Out (LR) +
8	Masse / Ground	*8	Lautspr. / Speaker Out (LR) -
*	nicht Lübeck C30 Luxembourg C30	*	not Lübeck C30 Luxembourg C30

C					
nicht Lübeck C30 / not Lübeck C30					
nicht Luxembourg C30 / not Luxembourg C30					
C1		C2		C3	
1	Preamp out (LR)	7	NC	13	CD-Changer I ² C-Bus Clock
2	Preamp out (RR)	8	NC	14	CD-Changer I ² C-Bus Data
3	Preamp ground	9	NC	15	NC
4	Preamp out (LF)	10	Fernb. +12 V / Remote control +12 V	16	+12 V geschaltet / +12 V switched
5	Preamp out (RF)	11	Fernbedienung / Remote control	17	CD-Changer I ² C-Bus Masse / Gnd.
6	+12 V geschaltet / +12 V switched	12	Fernb. Masse / RC Ground	18	Aux input Masse / Ground
				19	Aux input (L)
				20	Aux input (R)

D Ausstattung des Arbeitsplatzes:

1. Netzgerät 15 V regelbar, 10 A
(Betriebsspannung service 14,4 V)
2. Meßsender (z.B. Meguro, Leader, Kenwood)
3. Hochohmiges Voltmeter Ri > 10 MΩ
4. Outputmeter; Frequenzzähler; NF-Millivoltmeter; Stereocoder
5. Oszilloskop: - Empfindlichkeit: 5 mV bis 50 Volt/cm.
- Bandbreite: Gleichspannung bis 50 MHz.
6. Tastköpfe 10:1 und 1:1
7. Schraubendreher / Abgleichstifte (keramisch)
8. Lötstation

Reparaturhinweise

Programmieren der Geräteparameter:

(ist nach Auswechseln von D860 / HF - Teil erforderlich)

- FM ZF-Ablage
- Suchlaufstoppschwellen FM
- Programmierung der Stereo Schaltschwelle
- RDS Schaltschwelle
- Suchlaufstoppschwellen MW
- Suchlaufstoppschwellen LW

Servicemode

Servicemode aktivieren

1. Schalten Sie das Autoradio aus.
2. Betätigen Sie die Tasten **1 + 3** gleichzeitig und halten Sie die Tasten gedrückt.
3. Schalten Sie das Gerät ein und halten Sie die Tasten noch für ca. 1 Sekunde gedrückt.

Nach diesem Schritt erscheint im Display für 2 Sekunden **"SERVICE"** und der manuelle Sender - Suchlauf ist unwirksam.

Sie verlassen den Servicemode durch Ausschalten des Autoradios.

GB Work place equipment:

1. Power supply unit 15 volts adjustable, 10 A
(Supply voltage service 14,4 V)
2. Signal generator (Meguro, Leader, Kenwood)
3. High impedance voltmeter Ri > 10 MΩ
4. Output meter; frequency counter; AF millivoltmeter; stereo encoder
5. Oscilloscope: - inp. sensitivity: 5 mV to 50 volts per division
- bandwidth: d.c. to 50 MHz
6. Probes 10:1 and 1:1
7. Screwdriver / adjusting pins (ceramic)
8. Soldering station

Repair notes

Parameter programming:

(required after replacement of D860 / RF tuner)

- FM IF offset
- Seek tuning stop thresholds FM
- Stereo threshold
- RDS threshold
- Seek tuning stop thresholds MW
- Seek tuning stop thresholds LW

Service mode

Activating the service mode

1. Switch the unit off.
2. Press the push-buttons **1 + 3** simultaneously and hold them depressed.
3. Switch the unit back on and hold on to the buttons for approximately one more second.

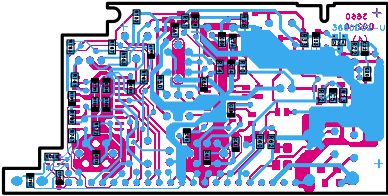
After this step the display will indicate **"SERVICE"** for 2 seconds and the manual tuning is inhibited.

You can quit the service mode by switching the radio off.

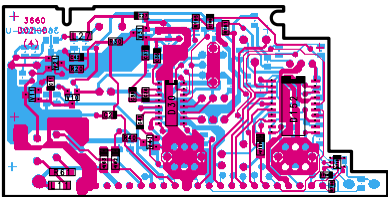
FunLine2
Düsseldorf C50
Bologna C50
Colorado DJ50
Carolina DJ50

HF-Platte
RF board
PL 3660 D02
Chip

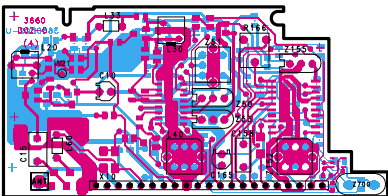
T-Line
Lübeck C30
Luxembourg C30
Augsburg C30
Dublin C30
Boston C30
Minnesota DJ30
Ontario DJ30



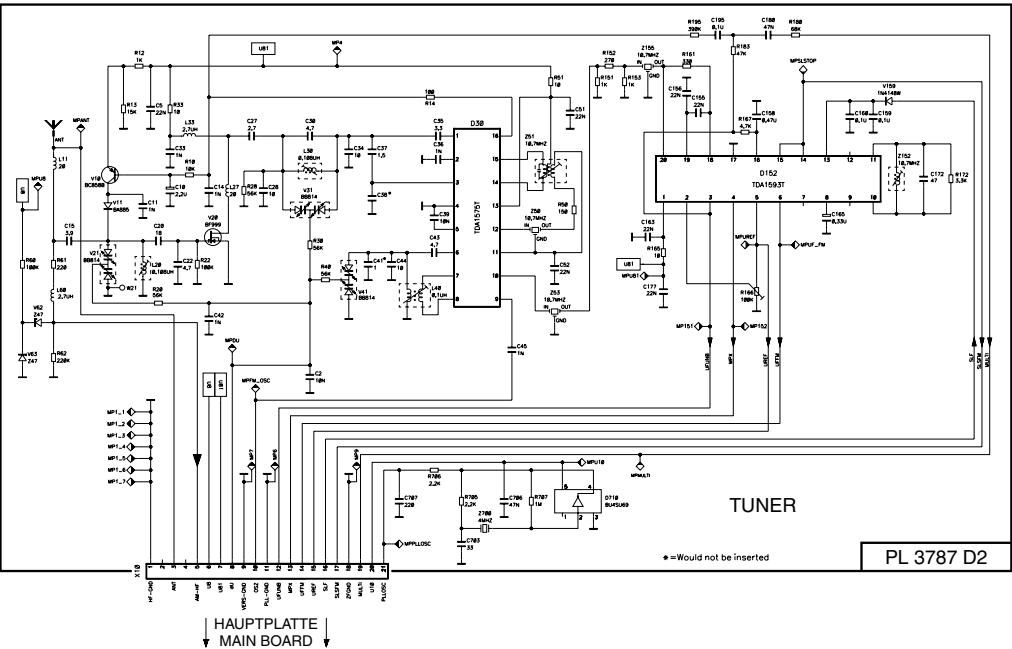
HF-Platte
RF board
PL 3660 D02
Chip



HF-Platte
RF board
PL 3660 D02
Chip

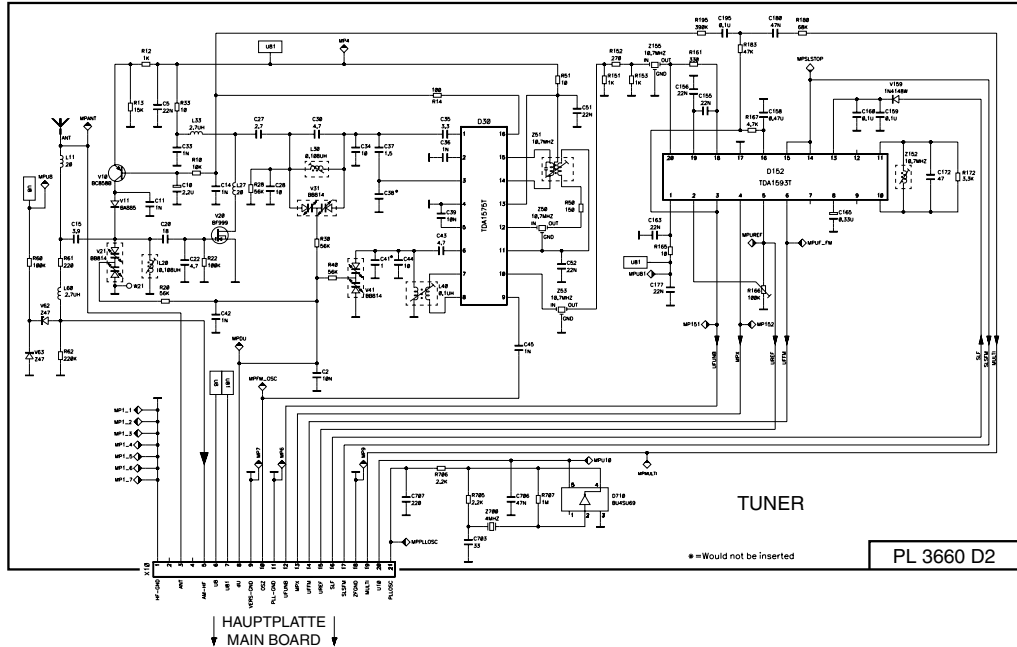


FunLine2
Sylt CD50
Modena CD50
Kiel CD30
Lausanne CD30
Alicante CD30



FunLine2
Düsseldorf C50
Bologna C50
Colorado DJ50
Carolina DJ50

T-Line
Lübeck C30
Luxembourg C30
Augsburg C30
Dublin C30
Boston C30
Minnesota DJ30
Ontario DJ30



BLAUPUNKT-Werke GmbH, Hildesheim
Produced in Germany by Carling Electronics
38033 Hildesheim
All rights reserved. Reproduction, distribution, or sale of this document is prohibited without the written permission of Blaupunkt-Werke GmbH.
All dimensions are given in millimeters unless otherwise specified.
All components are subject to change without notice.

	AUTORADIO D / EU	T-Line
FunLine 2		
Düsseldorf C50	7 640 105 510	Lübeck C30
Bologna C50	7 640 110 510	Luxembourg C30
Colorado DJ50	7 640 205 510	Augsburg C30
Carolina DJ50	7 640 210 510	Dublin C30
Sylt CD50	7 640 115 510	Boston C30
Modena CD50	7 640 120 510	Minnesota DJ30
Kiel CD30	7 640 125 510	Ontario DJ30
Lausanne CD30	7 640 155 310	
Alicante CD30	7 640 160 310	
Colorado DJ50	7 640 165 310	
Carolina DJ50	7 640 315 510	
Dakota DJ50	7 640 410 510	
	7 640 460 310	

CLASS 1 LASER PRODUCT

**UNSICHTBARE LASERSTRAHLUNG
NICHT DEM STRAHL AUSSETZEN
LASERKLASSE 3B**

VORSICHT!
Die Geräte beinhalten eine Laserkomponente!
Im Servicefall bitte nachfolgende Hinweise beachten:

- Das Gerät arbeitet mit unsichtbarem Laserstrahl.
- Bei geöffnetem Gerät tritt im Bereich des Plattenfaches Laserstrahlung aus.
- Nicht in den Strahl blicken.
- Unbefugte Personen vom Arbeitsplatz fernhalten.
- Der Betrachtungsabstand darf 13 cm nicht unterschreiten.
- Kann dies nicht eingehalten werden, muß eine geeignete Laserschutzbrille getragen werden.

CAUTION!
The CD units are equipped with a laser component!
For servicing make sure to observe the following instructions:

- The unit operates with invisible laser beams.
- When the cover is removed, invisible laser beams are emitted near the disc compartment.
- Avoid direct eye contact with these beams.
- Keep unauthorised persons away from the workbench.
- The viewing distance should not be less than 13 cm.
- If this distance cannot be kept, use suitable laser safety goggles.

	T-LINE										FUNLINE II				
	Lübeck C30	Luxembourg C30	Augsburg C30	Dublin C30	Boston C30	Kiel C30	Lausanne C30	Alicante C30	Düsseldorf C30	Bologna C30	Sylt C30	CD50	CD50	CD50	CD50
AM	X	X	X	X	X	X	X	X	X	X	X	X	X	X	X
CASSETTE PREAMP	X	X	X	X	X	X	X	X	X	X	X	X	X	X	X
CASS-MUTE	X	X	X	X	X	X	X	X	X	X	X	X	X	X	X
CC-MOTOR-SUPPLY	X	X	X	X	X	X	X	X	X	X	X	X	X	X	X
R1180 & R1181	X	X	X	X	X	X	X	X	X	X	X	X	X	X	X
X1100	X	X	X	X	X	X	X	X	X	X	X	X	X	X	X
X1500	X	X	X	X	X	X	X	X	X	X	X	X	X	X	X
CD												X	X	X	X
SD101												X	X	X	X
SD102												X	X	X	X
H1091, R1091 & V1091												X	X	X	X
R840 & R841	X	X	X	X	X	X	X	X	X	X	X	X	X	X	X
VOL-LEVEL-DETECTOR	X	X	X	X	X	X	X	X	X	X	X	X	X	X	X
PRE-AMP	X	X	X	X	X	X	X	X	X	X	X	X	X	X	X
4-CHANNEL	X	X	X	X	X	X	X	X	X	X	X	X	X	X	X
R1616	X	X	X	X	X	X	X	X	X	X	X	X	X	X	X
DIMMER												X	X	X	X
TEL-MUTE												X	X	X	X
IR-REMOTE												X	X	X	X
REGULATOR												X	X	X	X
AUX-IN												X	X	X	X
V2010	BC369	BC369	BC369	BC369	BC369	BC369	BC369	BC369	BC369	BC369	BC369	BC369	BC369	BC369	BC369
V2010	0.47µH	0.47µH	0.47µH	0.47µH	0.47µH	0.47µH	0.47µH	0.47µH	0.47µH	0.47µH	0.47µH	0.47µH	0.47µH	0.47µH	0.47µH
V2010	0.47µH	0.47µH	0.47µH	0.47µH	0.47µH	0.47µH	0.47µH	0.47µH	0.47µH	0.47µH	0.47µH	0.47µH	0.47µH	0.47µH	0.47µH
R1071 & V1071 (optional)												X	X	X	X
R681 (optional)												X	X	X	X
N.R. (optional)												X	X	X	X
GAL. (optional)												X	X	X	X

REMARKS : * = "Section/Component In Use"

MODEL PART NUMBER PRODUCT CODE
=====

T10CC(D) = 8 638 203 260 (7 640 105 510)
T10CC(E) = 8 638 203 261 (7 640 110 510)
T10CC(F) = 8 638 203 262 (7 640 205 510)
T20CC(D) = 8 638 203 263 (7 640 210 510)
T20CC(E) = 8 638 203 264 (7 640 115 510)
T20CC(F) = 8 638 203 265 (7 640 120 510)
T20CC(G) = 8 638 203 266 (7 640 155 510)
T20CC(H) = 8 638 203 267 (7 640 160 510)
T20CC(I) = 8 638 203 268 (7 640 255 510)
T20CC(J) = 8 638 203 269 (7 640 260 510)

PCB9639213269 & PCB9639213259
DUMMY TEST PAD

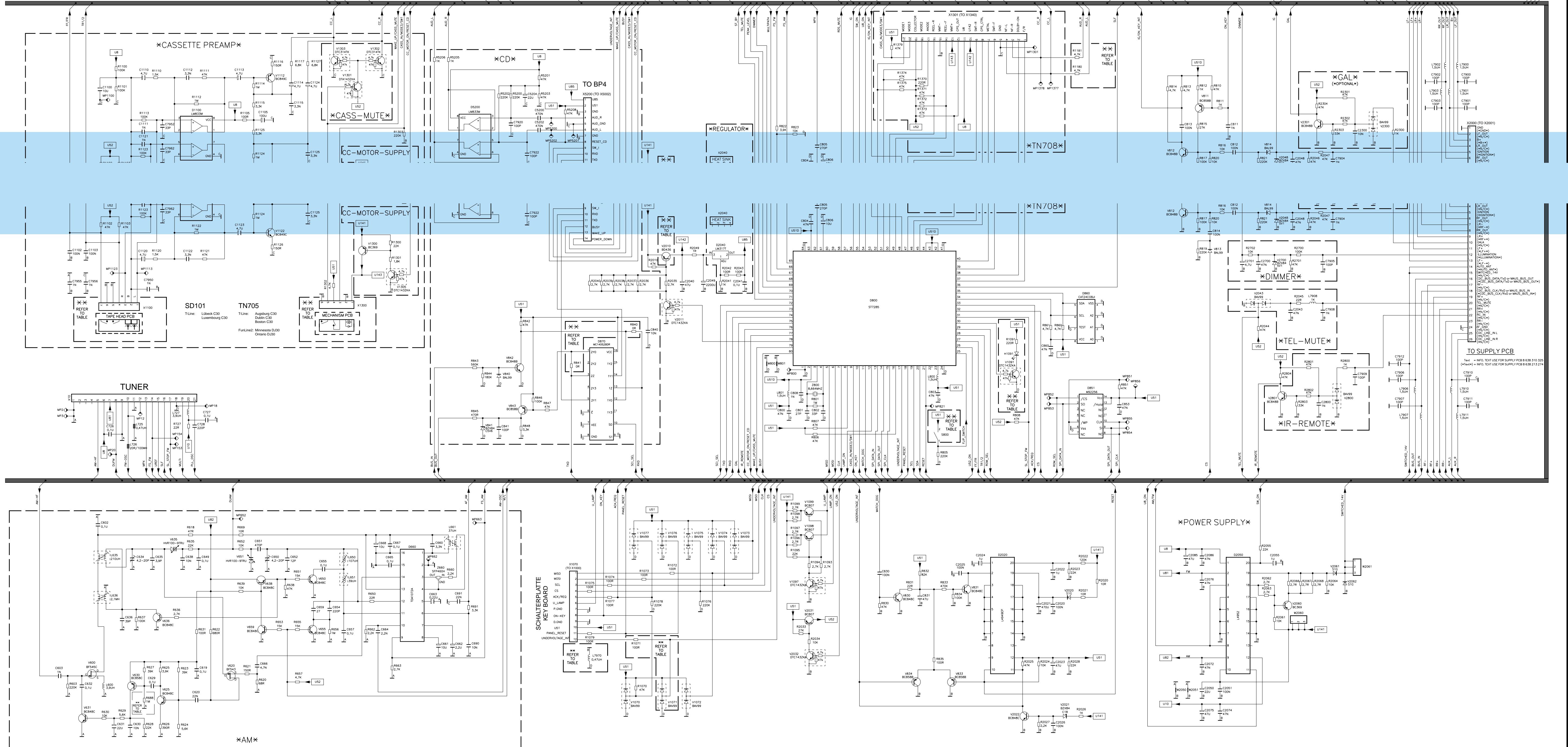
PCB9639213269 & PCB9639213259
DUMMY TEST PAD

COMPONENT USED TO INDICATE VARIOUS MODELS
=====

PCB9639213269 & PCB9639213259
DUMMY TEST PAD

PCB9639213269 & PCB9639213259
DUMMY TEST PAD

PCB9639213269 & PCB9639213259
DUMMY TEST PAD



	T-LINE										FUNLINE II			
	CC10 D	CC10 E	CC20 D	CC20 E	CC20 COLOR	CC20 D	CC20 E	CC20 COLOR	CC20 D	CC20 E	CC20 D	CC20 E	CC20 D	CC20 E
CASSETTE PREAMP	X	X	X	X	X	X	X	X	X	X	X	X	X	X
CASS-MUTE	X	X	X	X	X	X	X	X	X	X	X	X	X	X
CC-MOTOR-SUPPLY	X	X	X	X	X	X	X	X	X	X	X	X	X	X
BT180 & BT181	X	X	X	X	X	X	X	X	X	X	X	X	X	X
X1100			X	X	X						X	X	X	X
X1300			X	X	X						X	X	X	X
X1301						X	X	X	X	X	X	X	X	X
U2						X	X	X	X	X	X	X	X	X
TN708						X	X	X	X	X	X	X	X	X
H109, R109, X109, R840 & R841	X	X	X	X	X						X	X	X	X
VOL. LEVEL DETECTOR			X	X	X	X	X	X	X	X	X	X	X	X
PRE-AMP			X	X	X	X	X	X	X	X	X	X	X	X
4-CHANNEL			X	X	X	X	X	X	X	X	X	X	X	X
R1515			X	X	X	X	X	X	X	X	X	X	X	X
DIMMER			X	X	X	X	X	X	X	X	X	X	X	X
TEL-MUTE			X	X	X	X	X	X	X	X	X	X	X	X
IR-REMOTE			X	X	X	X	X	X	X	X	X	X	X	X
REGULATOR			X	X	X	X	X	X	X	X	X	X	X	X
AUX-IN			X	X	X	X	X	X	X	X	X	X	X	X
V2010	BC369	BC369	BC369	BC369	BC369	BC369	BC369	BC369	BC369	BC369	BC369	BC369	BC369	BC369
L2070	0.47µH	0.47µH	0.47µH	0.47µH	0.47µH	0.47µH	0.47µH	0.47µH	0.47µH	0.47µH	0.47µH	0.47µH	0.47µH	0.47µH
R1071 & V1071 (Optional)														
R0888 (Optional)														
N.R.I. (Optional)														
GAL (Optional)														

REMARKS : * = "Section/Component in Use"

MODEL PART NUMBER PRODUCT CODE
 T100C(1) = 8 638 203 260 (7 640 105 510)
 T100C(2) = 8 638 203 261 (7 640 110 510)
 F200C(1) = 8 638 203 262 (7 640 205 510)
 F200C(2) = 8 638 203 263 (7 640 210 510)
 T200C(1) = 8 638 203 264 (7 640 115 510)
 T200C(2) = 8 638 203 265 (7 640 120 510)
 T200C(3) = 8 638 203 266 (7 640 155 510)
 T200C(4) = 8 638 203 267 (7 640 160 510)
 F200C(3) = 8 638 203 268 (7 640 255 510)
 F200C(4) = 8 638 203 269 (7 640 260 510)

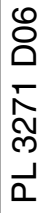
COMPONENT USED TO INDICATE VARIOUS MODELS
 F100C(1) F100C(2) F200C(1) F200C(2) F200C(3) F200C(4) F200C(5) F200C(6)
 F100C(7) F100C(8) F100C(9) F100C(10) F100C(11) F100C(12) F100C(13) F100C(14)
 F100C(15) F100C(16) F100C(17) F100C(18) F100C(19) F100C(20) F100C(21) F100C(22)

COMMON TEST POINT FOR
 PCB8638213269 & PCB8638213259

DUMMY TEST PAD

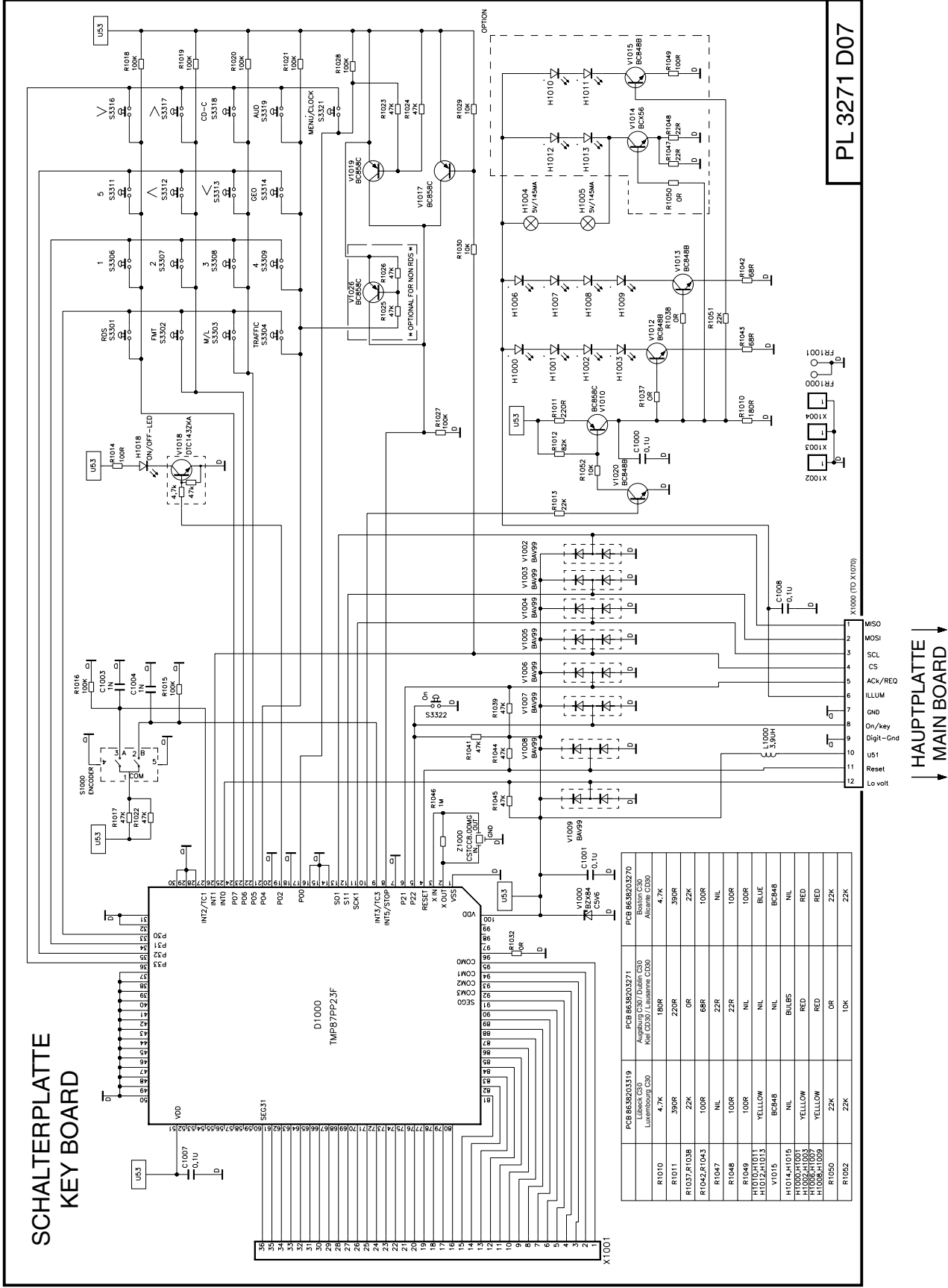
U1 U2 U3 U4 U5 U6 U7 U8 U9 U10 U11 U12 U13 U14 U15 U16 U17 U18 U19 U20 U21 U22 U23 U24 U25 U26 U27 U28 U29 U30 U31 U32 U33 U34 U35 U36 U37 U38 U39 U40 U41 U42 U43 U44 U45 U46 U47 U48 U49 U50 U51 U52 U53 U54 U55 U56 U57 U58 U59 U60 U61 U62 U63 U64 U65 U66 U67 U68 U69 U70 U71 U72 U73 U74 U75 U76 U77 U78 U79 U80 U81 U82 U83 U84 U85 U86 U87 U88 U89 U90 U91 U92 U93 U94 U95 U96 U97 U98 U99 U100 U101 U102 U103 U104 U105 U106 U107 U108 U109 U110 U111 U112 U113 U114 U115 U116 U117 U118 U119 U120 U121 U122 U123 U124 U125 U126 U127 U128 U129 U130 U131 U132 U133 U134 U135 U136 U137 U138 U139 U140 U141 U142 U143 U144 U145 U146 U147 U148 U149 U150 U151 U152 U153 U154 U155 U156 U157 U158 U159 U160 U161 U162 U163 U164 U165 U166 U167 U168 U169 U170 U171 U172 U173 U174 U175 U176 U177 U178 U179 U180 U181 U182 U183 U184 U185 U186 U187 U188 U189 U190 U191 U192 U193 U194 U195 U196 U197 U198 U199 U200 U201 U202 U203 U204 U205 U206 U207 U208 U209 U210 U211 U212 U213 U214 U215 U216 U217 U218 U219 U220 U221 U222 U223 U224 U225 U226 U227 U228 U229 U230 U231 U232 U233 U234 U235 U236 U237 U238 U239 U240 U241 U242 U243 U244 U245 U246 U247 U248 U249 U250 U251 U252 U253 U254 U255 U256 U257 U258 U259 U260 U261 U262 U263 U264 U265 U266 U267 U268 U269 U270 U271 U272 U273 U274 U275 U276 U277 U278 U279 U280 U281 U282 U283 U284 U285 U286 U287 U288 U289 U290 U291 U292 U293 U294 U295 U296 U297 U298 U299 U300 U301 U302 U303 U304 U305 U306 U307 U308 U309 U310 U311 U312 U313 U314 U315 U316 U317 U318 U319 U320 U321 U322 U323 U324 U325 U326 U327 U328 U329 U330 U331 U332 U333 U334 U335 U336 U337 U338 U339 U340 U341 U342 U343 U344 U345 U346 U347 U348 U349 U350 U351 U352 U353 U354 U355 U356 U357 U358 U359 U360 U361 U362 U363 U364 U365 U366 U367 U368 U369 U370 U371 U372 U373 U374 U375 U376 U377 U378 U379 U380 U381 U382 U383 U384 U385 U386 U387 U388 U389 U390 U391 U392 U393 U394 U395 U396 U397 U398 U399 U400 U401 U402 U403 U404 U405 U406 U407 U408 U409 U410 U411 U412 U413 U414 U415 U416 U417 U418 U419 U420 U421 U422 U423 U424 U425 U426 U427 U428 U429 U430 U431 U432 U433 U434 U435 U436 U437 U438 U439 U440 U441 U442 U443 U444 U445 U446 U447 U448 U449 U450 U451 U452 U453 U454 U455 U456 U457 U458 U459 U460 U461 U462 U463 U464 U465 U466 U467 U468 U469 U470 U471 U472 U473 U474 U475 U476 U477 U478 U479 U480 U481 U482 U483 U484 U485 U486 U487 U488 U489 U490 U491 U492 U493 U494 U495 U496 U497 U498 U499 U500 U501 U502 U503 U504 U505 U506 U507 U508 U509 U510 U511 U512 U513 U514 U515 U516 U517 U518 U519 U520 U521 U522 U523 U524 U525 U526 U527 U528 U529 U530 U531 U532 U533 U534 U535 U536 U537 U538 U539 U540 U541 U542 U543 U544 U545 U546 U547 U548 U549 U550 U551 U552 U553 U554 U555 U556 U557 U558 U559 U560 U561 U562 U563 U564 U565 U566 U567 U568 U569 U570 U571 U572 U573 U574 U575 U576 U577 U578 U579 U580 U581 U582 U583 U584 U585 U586 U587 U588 U589 U590 U591 U592 U593 U594 U595 U596 U597 U598 U599 U600 U601 U602 U603 U604 U605 U606 U607 U608 U609 U610 U611 U612 U613 U614 U615 U616 U617 U618 U619 U620 U621 U622 U623 U624 U625 U626 U627 U628 U629 U630 U631 U632 U633 U634 U635 U636 U637 U638 U639 U640 U641 U642 U643 U644 U645 U646 U647 U648 U649 U650 U651 U652 U653 U654 U655 U656 U657 U658 U659 U660 U661 U662 U663 U664 U665 U666 U667 U668 U669 U670 U671 U672 U673 U674 U675 U676 U677 U678 U679 U680 U681 U682 U683 U684 U685 U686 U687 U688 U689 U690 U691 U692 U693 U694 U695 U696 U697 U698 U699 U700 U701 U702 U703 U704 U705 U706 U707 U708 U709 U710 U711 U712 U713 U714 U715 U716 U717 U718 U719 U720 U721 U722 U723 U724 U725 U726 U727 U728 U729 U730 U731 U732 U733 U734 U735 U736 U737 U738 U739 U740 U741 U742 U743 U744 U745 U746 U747 U748 U749 U750 U751 U752 U753 U754 U755 U756 U757 U758 U759 U760 U761 U762 U763 U764 U765 U766 U767 U768 U769 U770 U771 U772 U773 U774 U775 U776 U777 U778 U779 U780 U781 U782 U783 U784 U785 U786 U787 U788 U789 U790 U791 U792 U793 U794 U795 U796 U797 U798 U799 U800 U801 U802 U803 U804 U805 U806 U807 U808 U809 U810 U811 U812 U813 U814 U815 U816 U817 U818 U819 U820 U821 U822 U823 U824 U825 U826 U827 U828 U829 U830 U831 U832 U833 U834 U835 U836 U837 U838 U839 U840 U841 U842 U843 U844 U845 U846 U847 U848 U849 U850 U851 U852 U853 U854 U855 U856 U857 U858 U859 U860 U861 U862 U863 U864 U865 U866 U867 U868 U869 U870 U871 U872 U873 U874 U875 U876 U877 U878 U879 U880 U881 U882 U883 U884 U885 U886 U887 U888 U889 U890 U891 U892 U893 U894 U895 U896 U897 U898 U899 U900 U901 U902 U903 U904 U905 U906 U907 U908 U909 U910 U911 U912 U913 U914 U915 U916 U917 U918 U919 U920 U921 U922 U923 U924 U925 U926 U927 U928 U929 U930 U931 U932 U933 U934 U935 U936 U937 U938 U939 U940 U941 U942 U943 U944 U945 U946 U947 U948 U949 U950 U951 U952 U953 U954 U955 U956 U957 U958 U959 U960 U961 U962 U963 U964 U965 U966 U967 U968 U969 U970 U971 U972 U973 U974 U975 U976 U977 U978 U979 U980 U981 U982 U983 U984 U985 U986 U987 U988 U989 U990 U991 U992 U993 U994 U995 U996 U997 U998 U999 U1000 U1001 U1002 U1003 U1004 U1005 U1006 U1007 U1008 U1009 U1010 U1011 U1012 U1013 U1014 U1015 U1016 U1017 U1018 U1019 U1020 U1021 U1022 U1023 U1024 U1025 U1026 U1027 U1028 U1029 U1030 U1031 U1032 U1033 U1034 U1035 U1036 U1037 U1038 U1039 U1040 U1041 U1042 U1043 U1044 U1045 U1046 U1047 U1048 U1049 U1050 U1051 U1052 U1053 U1054 U1055 U1056 U1057 U1058 U1059 U1060 U1061 U1062 U1063 U1064 U1065 U1066 U1067 U1068 U1069 U1070 U1071 U1072 U1073 U1074 U1075 U1076 U1077 U1078 U1079 U1080 U1081 U1082 U1083 U1084 U1085 U1086 U1087 U1088 U1089 U1090 U1091 U1092 U1093 U1094 U1095 U1096 U1097 U1098 U1099 U1100 U1101 U1102 U1103 U1104 U1105 U1106 U1107 U1108 U1109 U1110 U1111 U1112 U1113 U1114 U1115 U1116 U1117 U1118 U1119 U1120 U1121 U1122 U1123 U1124 U1125 U1126 U1127 U1128 U1129 U1130 U1131 U1132 U1133 U1134 U1135 U1136 U1137 U1138 U1139 U1140 U1141 U1142 U1143 U1144 U1145 U1146 U1147 U1148 U1149 U1150 U1151 U1152 U1153 U1154 U1155 U1156 U1157 U1158 U1159 U1160 U1161 U1162 U1163 U1164 U1165 U1166 U1167 U1168 U1169 U1170 U1171 U1172 U1173 U1174 U1175 U1176 U1177 U1178 U1179 U1180 U1181 U1182 U1183 U1184 U1185 U1186 U1187 U1188 U1189 U1190 U1191 U1192 U1193 U1194 U1195 U1196 U1197 U1198 U1199 U1200 U1201 U1202 U1203 U1204 U1205 U1206 U1207 U1208 U1209 U1210 U1211 U1212 U1213 U1214 U1215 U1216 U1217 U1218 U1219 U1220 U1221 U1222 U1223 U1224 U1225 U1226 U1227 U1228 U1229 U1230 U1231 U1232 U1233 U1234 U1235 U1236 U1237 U1238 U1239 U1240 U1241 U1242 U1243 U1244 U1245 U1246 U1247 U1248 U1249 U1250 U1251 U1252 U1253 U1254 U1255 U1256 U1257 U1258 U1259 U1260 U1261 U1262 U1263 U1264 U1265 U1266 U1267 U1268 U1269 U1270 U1271 U1272 U1273 U1274 U1275 U1276 U1277 U1278 U1279 U1280 U1281 U1282 U1283 U1284 U1285 U1286 U1287 U1288 U1289 U1290 U1291 U1292 U1293 U1294 U1295 U1296 U1297 U1298 U1299 U1300 U1301 U1302 U1303 U1304 U1305 U1306 U1307 U1308 U1309 U1310 U1311 U1312 U1313 U1314 U1315 U1316 U1317 U1318 U1319 U1320 U1321 U1322 U1323 U1324 U1325 U1326 U1327 U1328 U1329 U1330 U1331 U1332 U1333 U1334 U1335 U1336 U1337 U1338 U1339 U1340 U1341 U1342 U1343 U1344 U1345 U1346 U1347 U1348 U1349 U1350 U1351 U1352 U1353 U1354 U1355 U1356 U1357 U1358 U1359 U1360 U1361 U1362 U1363 U1364 U1365 U1366 U1367 U1368 U1369 U1370 U1371 U1372 U1373 U1374 U1375 U1376 U1377 U1378 U1379 U1380 U1381 U1382 U1383 U1384 U1385 U1386 U1387 U1388 U1389 U1390 U1391 U1392 U1393 U1394 U1395 U1396 U1397 U1398 U1399 U1400 U1401 U1402 U1403 U1404 U1405 U1406 U1407 U1408 U1409 U1410 U1411 U1412 U1413 U1414 U1415 U1416 U1417 U1418 U1419 U1420 U1421 U1422 U1423 U1424 U1425 U1426 U1427 U1428 U1429 U1430 U1431 U1432 U1433 U1434 U1435 U1436 U1437 U1438 U1439 U1440 U1441 U1442 U1443 U1444 U1445 U1446 U1447 U1448 U1449 U1450 U1451 U1452 U1453 U1454 U1455 U1456 U1457 U1458 U1459 U1460 U1461 U1462 U1463 U1464 U1465 U1466 U1467 U1468 U1469 U1470 U1471 U1472 U1473 U1474 U1475 U1476 U1477 U1478 U1479 U1480 U1481 U1482 U1483 U1484 U1485 U1486 U1487 U1488 U1489 U1490 U1491 U1492 U1493 U1494 U1495 U1496 U1497 U1498 U1499 U1500 U1501 U1502 U1503 U1504 U1505 U1506 U1507 U1508 U1509 U1510 U1511 U1512 U1513 U1514 U1515 U1516 U1517 U1518 U1519 U1520 U1521 U1522 U1523 U1524 U1525 U1526 U1527 U1528 U1529 U1530 U1531 U1532 U1533 U1534 U1535 U1536 U1537 U1538 U1539 U1540 U1541 U1542 U1543 U1544 U1545 U1546 U1547 U1548 U1549 U1550 U1551 U1552 U1553 U1554 U1555 U1556 U1557 U1558 U1559 U1560 U1561 U1562 U1563 U1564 U1565 U1566 U1567 U1568 U1569 U1570 U1571 U1572 U1573 U1574 U1575 U1576 U1577 U1578 U1579 U1580 U1581 U1582 U1583 U1584 U1585 U1586 U1587 U1588 U1589 U1590 U1591 U1592 U1593 U1594 U1595 U1596 U1597 U1598 U1599 U1600 U1601 U1602 U1603 U1604 U1605 U1606 U1607 U1608 U1609 U1610 U1611 U1612 U1613 U1614 U1615 U1616 U1617 U1618 U1619 U1620 U1621 U1622 U1623 U1624 U1625 U1626 U1627 U1628 U1629 U1630 U1631 U1632 U1633 U1634 U1635 U1636 U1637 U1638 U1639 U1640 U1641 U1642 U1643 U1644 U1645 U1646 U1647 U1648 U1649 U1650 U1651 U1652 U1653 U1654 U1655 U1656 U1657 U1658 U1659 U1660 U1661 U1662 U1663 U1664 U1665 U1666 U1667 U1668 U1669 U1670 U1671 U1672 U1673 U1674 U1675 U1676 U1677 U1678 U1679 U1680 U1681 U1682 U1683 U1684 U1685 U1686 U1687 U1688 U1689 U1690 U1691 U1692 U1693 U1694 U1695 U1696 U1697 U1698 U1699 U1700 U1701 U1702 U1703 U1704 U1705 U1706 U1707 U1708 U1709 U1710 U1711 U1712 U1713 U1714 U1715 U1716 U1717 U1718 U1719 U1720 U1721 U1722 U1723 U1724 U1725 U1726 U1727 U1728 U1729 U1730 U1731 U1732 U1733 U1734 U1735 U1736 U1737 U1738 U1739 U1740 U1741 U1742 U1743 U1744 U1745 U1746 U1747 U1748 U1749 U1750 U1751 U1752 U1753 U1754 U1755 U1756 U1757 U1758 U1759 U1760 U1761 U1762 U1763 U1764 U1765 U1766 U1767 U1768 U1769 U1770 U1771 U1772 U1773 U1774 U1775 U1776 U1777 U1778 U1779 U1780 U1781 U1782 U1783 U1784 U1785 U1786 U1787 U1788 U1789 U1790 U1791 U1792 U1793 U1794 U1795 U1796 U1797 U1798 U1799 U1800 U1801 U1802 U1803 U1804 U1805 U1806 U1807 U1808 U1809 U1810 U1811 U1812 U1813 U1814 U1815 U1816 U1817 U1818 U1819 U1820 U1821 U1822 U1823 U1824 U1825 U1826 U1827 U1828 U1829 U1830 U1831 U1832 U1833 U1834 U1835 U1836 U1837 U1838 U1839 U1840 U1841 U1842 U1843 U1844 U1845 U1846 U1847 U1848 U1849 U1850 U1851 U1852 U1853 U1854 U1855 U1856 U1857 U1858 U1859 U1860 U1861 U1862 U1863 U1864 U1865 U1866 U1867 U1868 U1869 U1870 U1871 U1872 U1873 U1874 U1875 U1876 U1877 U1878 U1879 U1880 U1881 U1882 U1883 U1884 U1885 U1886 U1887 U1888 U1889 U1890 U1891 U1892 U1893 U1894 U1895 U1896 U1897 U1898 U1899 U1900 U1901 U1902 U1903 U1904 U1905 U1906 U1907 U1908 U1909 U1910 U1911 U1912 U1913 U1914 U1915 U1916 U1917 U1918 U1919 U1920 U1921 U1922 U1923 U1924 U1925 U1926 U1927 U1928 U1929 U1930 U1931 U1932 U1933 U1934 U1935 U1936 U1937 U1938 U1939 U1940 U1941 U1942 U1943 U1944 U1945 U1946 U1947 U1948 U1949 U1950 U1951 U1952 U1953 U1954 U1955 U1956 U1957 U1958 U1959 U1960 U1961 U1962 U1963 U1964 U1965 U1966 U1967 U1968 U1969 U1970 U1971 U1972 U1973 U1974 U1975 U1976 U1977 U1978 U1979 U1980 U1981 U1982 U1983 U1984 U1985 U1986 U1987 U1988 U1989 U1990 U1991 U1992 U1993 U1994 U1995 U1996 U1997 U1998 U1999 U2000 U2001 U2002 U2003 U2004 U2005 U2006 U2007 U2008 U2009 U2010 U

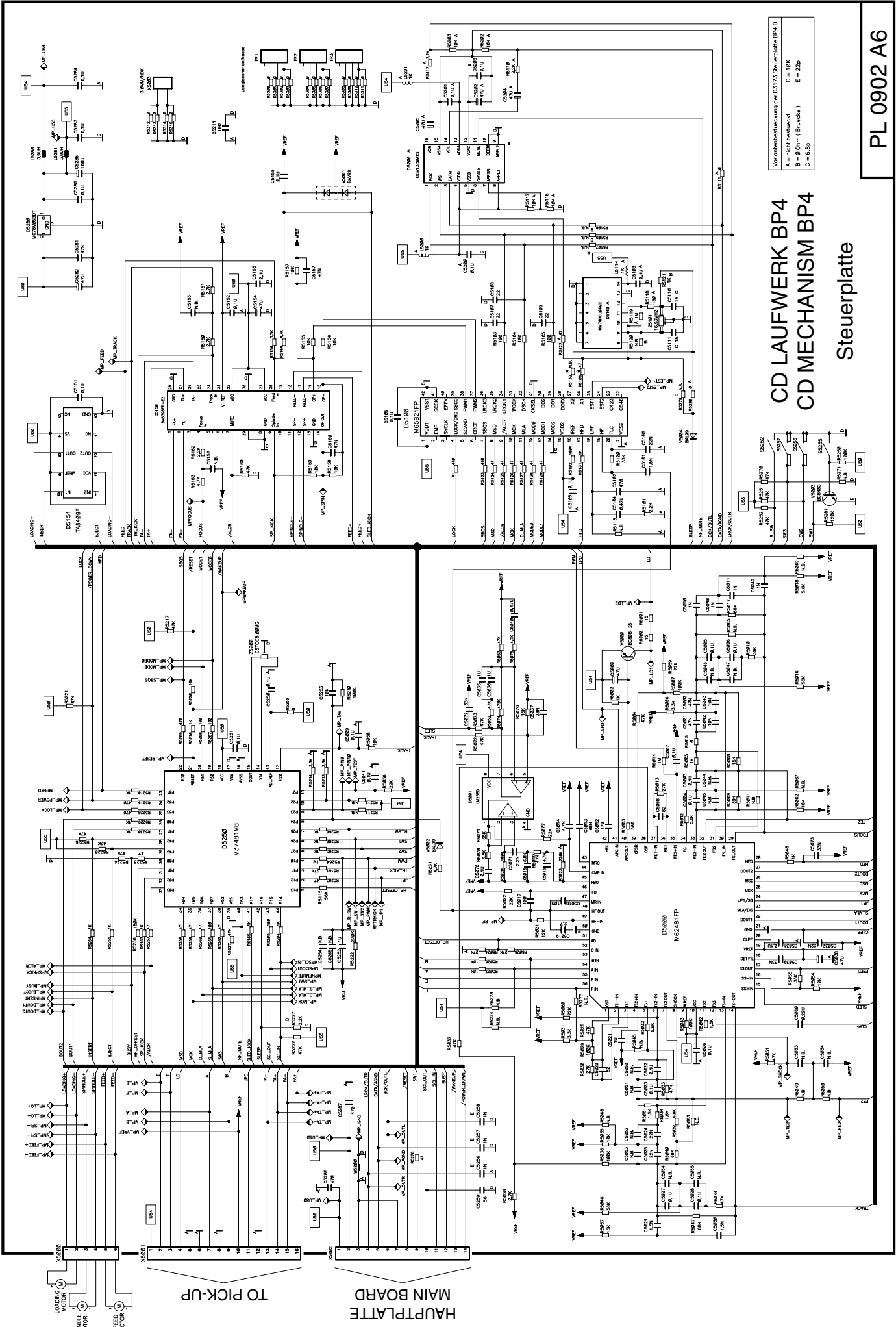
SCHALTERPLATTE KEY BOARD



HAUPTPLATTE
MAIN BOARD

Schalterplatte / Key board A07





Variantenbezeichnung der DS151 Steuerplatte BP4 D
D = 18K
A = nicht bestückt
B = 8 Ohm (Brücke)
E = 22p
C = 6dp

CD LAUFWERK BP4
CD MECHANISM BP4

Steuerplatte

PL 0902 A6

